

CYCLIN A2 RABBIT MAB

货号: N262086

产品全名: Cyclin A2 兔单克隆抗体

基因符号 Ccn1; Ccna; Cyca; Ccn-1; CycA2; AA408589

UNIPROT ID: P51943

背景: Cyclin which controls both the G1/S and the G2/M transition phases of the cell cycle. Functions through the formation of specific serine/threonine kinase holoenzyme complexes with the cyclin-dependent protein kinases CDK1 and CDK2. The cyclin subunit confers the substrate specificity of these complexes and differentially interacts with and activates CDK1 and CDK2 throughout the cell cycle.

抗原: Recombinant protein of mouse Cyclin A2

经过测试的应用: WB,IHC-F,IHC-P,ICC/IF

推荐稀释比: WB: 1/500-1/1000 IHC: 1/50-1/100 IF: 1/50-1/200

种属反应性: Rabbit

克隆性: Rabbit Monoclonal

克隆编号: R06-5H1

分子量: Calculated MW: 47 kDa; Observed MW: 47 kDa

亚型: IgG

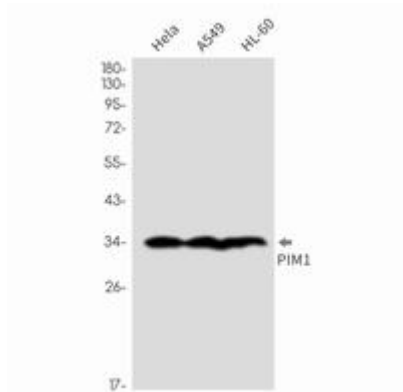
纯化: Affinity Purified

种属反应性: Human, Mouse and Rat

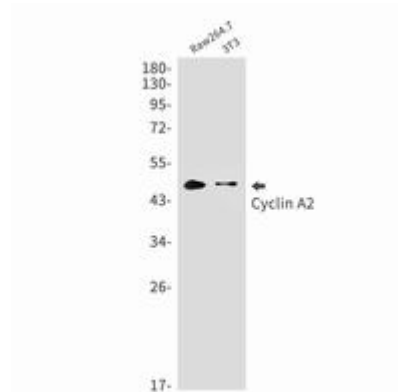
成分: PBS (without Mg²⁺ and Ca²⁺), pH 7.3 containing 50% glycerol, 0.5% BSA and 0.02% sodium azide

研究领域: Cell Biology

储存和运输: Store at -20°C. Avoid repeated freezing and thawing



Western blot analysis of Cyclin A2 in Jurkat, C6, A431 lysates using Cyclin A2 antibody.



Western blot analysis of Cyclin A2 in Raw264.7, 3T3 lysates using Cyclin A2 antibody.