

## CYCLIN A2 RABBIT MAB

货号: N262087

产品全名: Cyclin A2 兔单克隆抗体

基因符号 CCNI; CCNA

**UNIPROT ID:** P20248

**背景:** The protein encoded by this gene belongs to the highly conserved cyclin family, whose members are characterized by a dramatic periodicity in protein abundance through the cell cycle. Cyclins function as regulators of CDK kinases. Different cyclins exhibit distinct expression and degradation patterns which contribute to the temporal coordination of each mitotic event. In contrast to cyclin A1, which is present only in germ cells, this cyclin is expressed in all tissues. This cyclin binds and activates CDC2 or CDK2 kinases, and thus promotes both cell cycle G1/S and G2/M transitions.

**抗原:** A synthetic peptide of human Cyclin A2

**经过测试的应用:** WB, IHC-F, IHC-P, ICC/IF, IP

**推荐稀释比:** WB: 1/500-1/1000 IHC: 1/50-1/100 IF: 1/50-1/200 IP: 1/20

**种属反应性:** Rabbit

**克隆性:** Rabbit Monoclonal

**克隆编号:** R02-9B6

**分子量:** Calculated MW: 49 kDa; Observed MW: 49 kDa

**亚型:** IgG

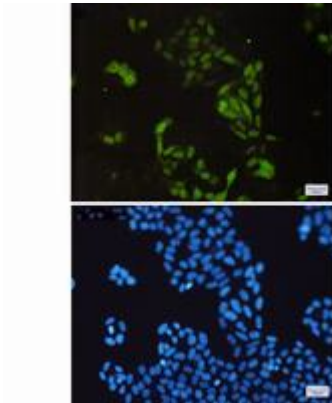
**纯化:** Affinity Purified

**种属反应性:** Human, Mouse and Rat

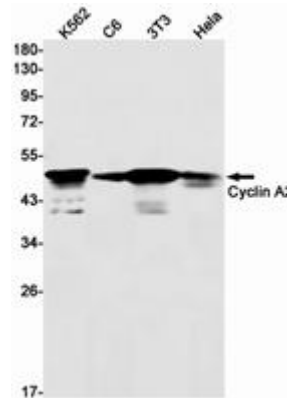
**成分:** PBS (without Mg<sup>2+</sup> and Ca<sup>2+</sup>), pH 7.3 containing 50% glycerol, 0.5% BSA and 0.02% sodium azide

**研究领域:** Cell Biology

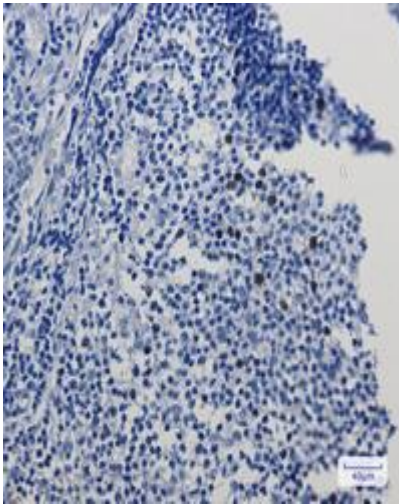
**储存和运输:** Store at -20°C. Avoid repeated freezing and thawing



Immunocytochemistry analysis of Cyclin A2 (green) in HeLa using Cyclin A2 antibody, and DAPI (blue)



Western blot analysis of Cyclin A2 in K562, C6, 3T3, HeLa lysates using Cyclin A2 antibody.



Immunohistochemistry analysis of paraffin-embedded Human tonsil using Cyclin A2 antibody. High-pressure and temperature Sodium Citrate pH 6.0 was used for antigen retrieval.