

CYCLIN A1/A2 RABBIT PAB

货号: N225718

产品全名: Cyclin A1/A2 兔多抗

基因符号 CCN1; CCNA; CCNA1; CCNA2; CT146; Cyclin-A; Cyclin-A1;
Cyclin-A2

UNIPROT ID: P20248/P78396

背景: May primarily function in the control of the germline meiotic cell cycle and additionally in the control of mitotic cell cycle in some somatic cells. Essential for the control of the cell cycle at the G1/S (start) and the G2/M (mitosis) transitions.

抗原: A synthesized peptide derived from human Cyclin A1/A2

经过测试的应用: WB,IHC-P,IP

推荐稀释比: WB: 1/500-1/1000 IHC: 1/50-1/100 IP: 1/20

种属反应性: Rabbit

克隆性: Rabbit Polyclonal

分子量: Calculated MW: 52,49 kDa; Observed MW: 52,49 kDa

亚型: IgG

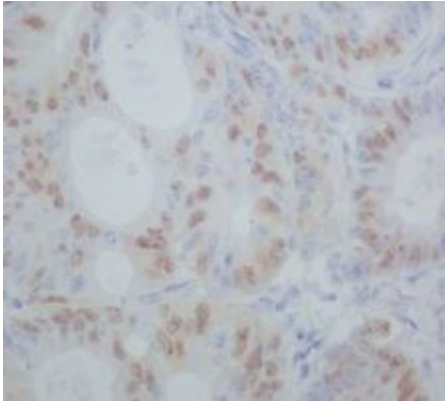
纯化: Affinity Chromatography

种属反应性: Human

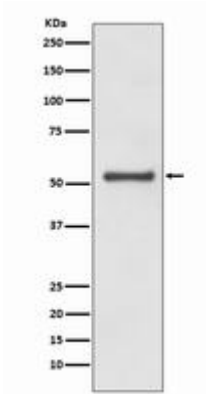
成分: PBS (without Mg²⁺ and Ca²⁺), pH 7.3 containing 50% glycerol, 0.5% BSA and 0.02% sodium azide

研究领域: Cell Biology

储存和运输: Store at -20°C. Avoid repeated freezing and thawing



Immunohistochemistry analysis of paraffin-embedded Human colon cancer using Cyclin A1/A2 antibody. High-pressure and temperature Sodium Citrate pH 6.0 was used for antigen retrieval.



Western blot analysis of Cyclin A1/A2 in HeLa lysates using Cyclin A1/A2 antibody.