

CYCLIN A1/A2 RABBIT MAB

货号: N263634

产品全名: Cyclin A1/A2 兔单克隆抗体

基因符号 CCN1; CCNA; CCNA1; CCNA2; CT146; Cyclin-A; Cyclin-A1; Cyclin-A2

UNIPROT ID: P20248/P78396

背景: May primarily function in the control of the germline meiotic cell cycle and additionally in the control of mitotic cell cycle in some somatic cells. Essential for the control of the cell cycle at the G1/S (start) and the G2/M (mitosis) transitions.

抗原: A synthesized peptide derived from human Cyclin A1/A2

经过测试的应用: WB,IP

推荐稀释比: WB: 1/500-1/1000 IP: 1/20

种属反应性: Rabbit

克隆性: Rabbit Monoclonal

克隆编号: R07-3D4

分子量: Calculated MW: 52,49 kDa; Observed MW: 52,49 kDa

亚型: IgG

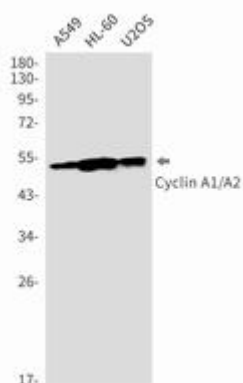
纯化: Affinity Purified

种属反应性: Human

成分: PBS (without Mg²⁺ and Ca²⁺), pH 7.3 containing 50% glycerol, 0.5% BSA and 0.02% sodium azide

研究领域: Cell Biology

储存和运输: Store at -20°C. Avoid repeated freezing and thawing



Western blot analysis of Cyclin A1/A2 in A549, HL-60, U2OS lysates using Cyclin A1/A2 antibody.



Product Description

Pioneering GTPase and Oncogene Product Development since 2010
