

CYBB RABBIT PAB

货号: S220757

产品全名: CYBB 兔多抗

基因符号: CGD; NOX2; AMCBX2; GP91-I; GP91PHOX; p91-PHOX; GP91-PHOX

UNIPROT ID: P04839 (Gene Accession - NP_000388)

背景: Cytochrome b (-245) is composed of cytochrome b alpha (CYBA) and beta (CYBB) chain. It has been proposed as a primary component of the microbicidal oxidase system of phagocytes. CYBB deficiency is one of five described biochemical defects associated with chronic granulomatous disease (CGD). In this disorder, there is decreased activity of phagocyte NADPH oxidase; neutrophils are able to phagocytize bacteria but cannot kill them in the phagocytic vacuoles.

抗原: Synthetic peptide of human CYBB

经过测试的应用: ELISA, IHC

推荐稀释比: IHC: 50-200; ELISA: 2000-5000

种属反应性: Rabbit

克隆性: Rabbit Polyclonal

亚型: Immunogen-specific rabbit IgG

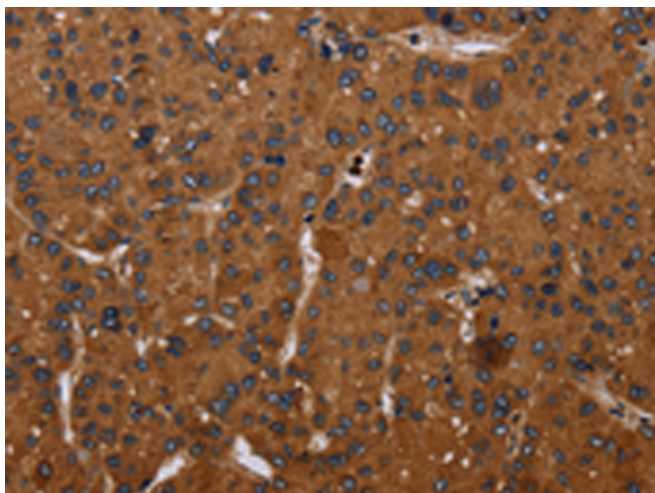
纯化: Antigen affinity purification

种属反应性: Human, Mouse

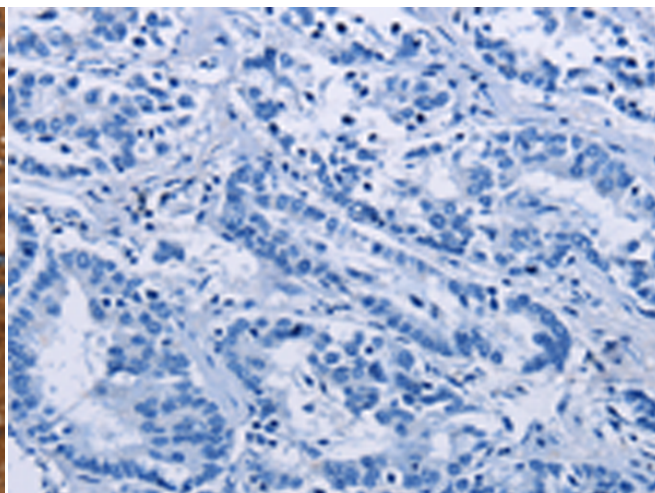
成分: PBS (without Mg²⁺ and Ca²⁺), pH 7.4, 150 mM NaCl, 0.05% Sodium Azide and 40% glycerol

研究领域: Cancer, Metabolism, Immunology

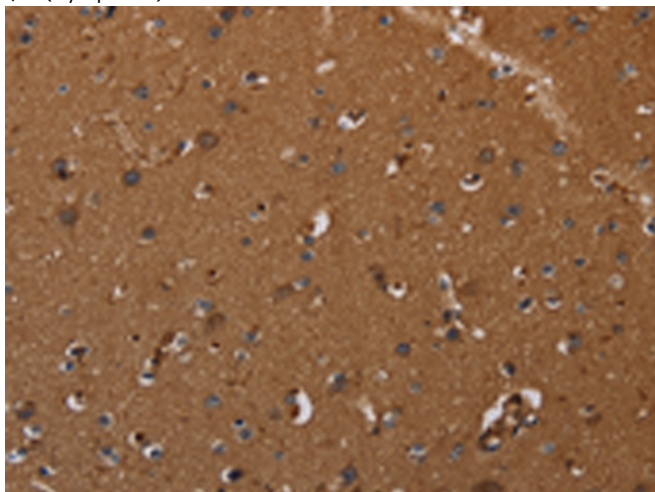
储存和运输: Store at -20°C. Avoid repeated freezing and thawing



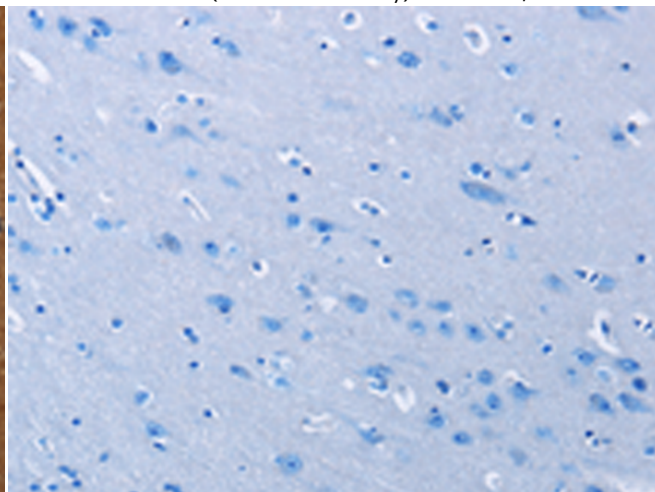
Immunohistochemistry analysis of paraffin embedded Human liver cancer tissue using 220757(CYBB Antibody) at a dilution of 1/50(Cytoplasm).



In comparison with the IHC on the left, the same paraffin-embedded Human liver cancer tissue is first treated with the synthetic peptide and then with 220757(Anti-CYBB Antibody) at dilution 1/50.



The image on the left is immunohistochemistry of paraffin-embedded Human brain tissue using 220757(Anti-CYBB Antibody) at a dilution of 1/50.



In comparison with the IHC on the left, the same paraffin-embedded Human brain tissue is first treated with synthetic peptide and then with D261970(Anti-CYBB Antibody) at dilution 1/50.



Product Description

Pioneering GTPase and Oncogene Product Development since 2010
