

CYBA RABBIT PAB

货号: S220631

产品全名: CYBA 兔多抗

基因符号 p22-PHOX

UNIPROT ID: P13498 (Gene Accession - NP_000092)

背景: Cytochrome b is comprised of a light chain (alpha) and a heavy chain (beta). This gene encodes the light, alpha subunit which has been proposed as a primary component of the microbicidal oxidase system of phagocytes. Mutations in this gene are associated with autosomal recessive chronic granulomatous disease (CGD), that is characterized by the failure of activated phagocytes to generate superoxide, which is important for the microbicidal activity of these cells.

抗原: Synthetic peptide of human CYBA

经过测试的应用: ELISA, IHC

推荐稀释比: IHC: 50-200; ELISA: 2000-10000

种属反应性: Rabbit

克隆性: Rabbit Polyclonal

亚型: Immunogen-specific rabbit IgG

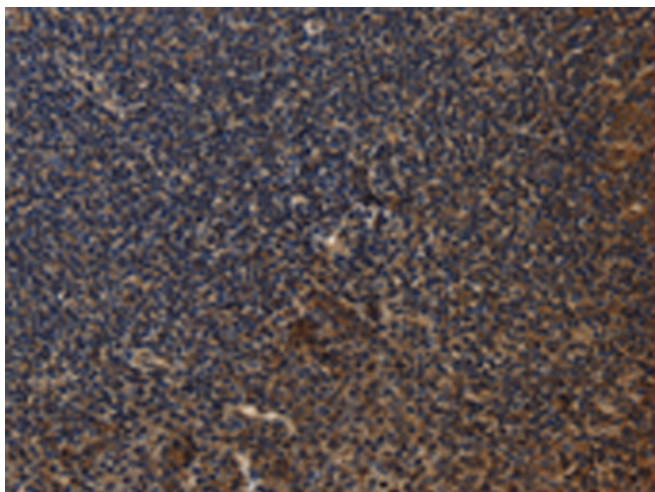
纯化: Antigen affinity purification

种属反应性: Human, Mouse, Rat

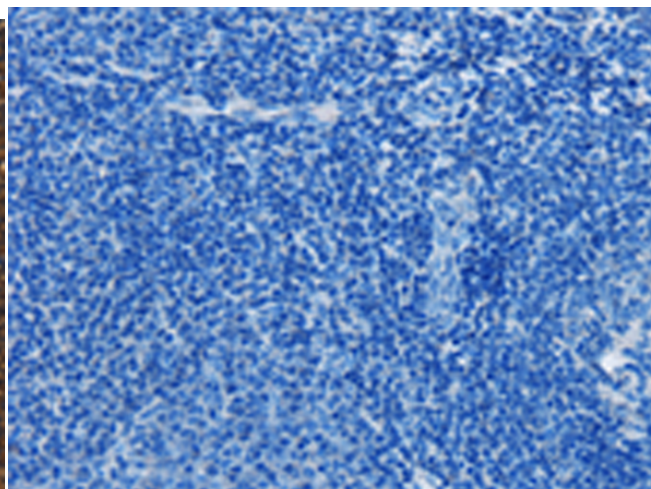
成分: PBS (without Mg²⁺ and Ca²⁺), pH 7.4, 150 mM NaCl, 0.05% Sodium Azide and 40% glycerol

研究领域: Cancer, Metabolism, Cell Biology, Immunology

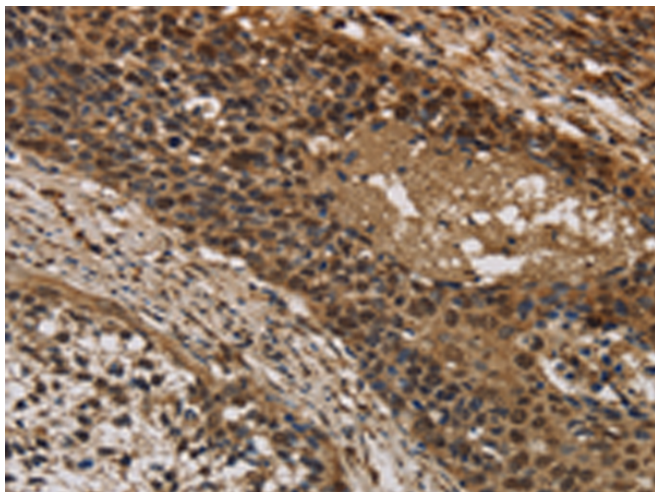
储存和运输: Store at -20°C. Avoid repeated freezing and thawing



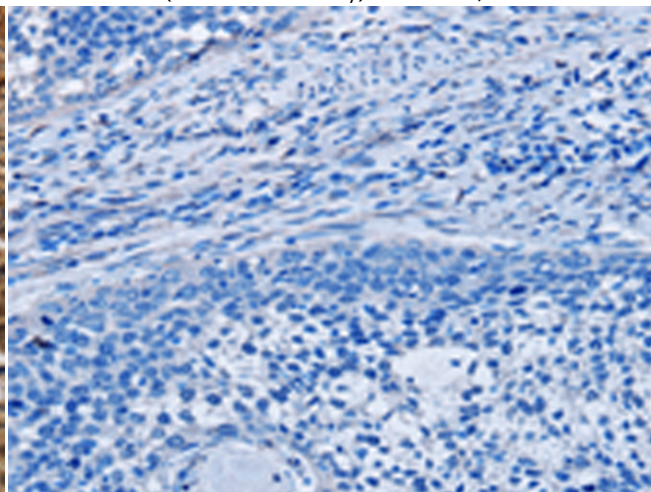
Immunohistochemistry analysis of paraffin embedded Human tonsil tissue using 220631(CYBA Antibody) at a dilution of 1/20(Cytoplasm).



In comparison with the IHC on the left, the same paraffin-embedded Human tonsil tissue is first treated with the synthetic peptide and then with 220631(Anti-CYBA Antibody) at dilution 1/20.



The image on the left is immunohistochemistry of paraffin-embedded Human cervical cancer tissue using 220631(Anti-CYBA Antibody) at a dilution of 1/20.



In comparison with the IHC on the left, the same paraffin-embedded Human cervical cancer tissue is first treated with synthetic peptide and then with D261789(Anti-CYBA Antibody) at dilution 1/20.



Product Description

Pioneering GTPase and Oncogene Product Development since 2010
