

CXXC1 RABBIT PAB

货号: S218479

产品全名: CXXC1 兔多抗

基因符号: CFPI; CGBP; SPPI; PCCXI; PHF18; hCGBP; ZCGPC1; HsT2645; 2410002116Rik; 5830420C16Rik

UNIPROT ID: Q9P0U4 (Gene Accession - BC015733)

背景: This gene encodes a protein that functions as a transcriptional activator that binds specifically to non-methylated CpG motifs through its CXXC domain. The protein is a component of the SETD1 complex, regulates gene expression and is essential for vertebrate development.

抗原: Fusion protein of human CXXC1

经过测试的应用: ELISA, IHC

推荐稀释比: IHC: 100-200; ELISA: 5000-10000

种属反应性: Rabbit

克隆性: Rabbit Polyclonal

亚型: Immunogen-specific rabbit IgG

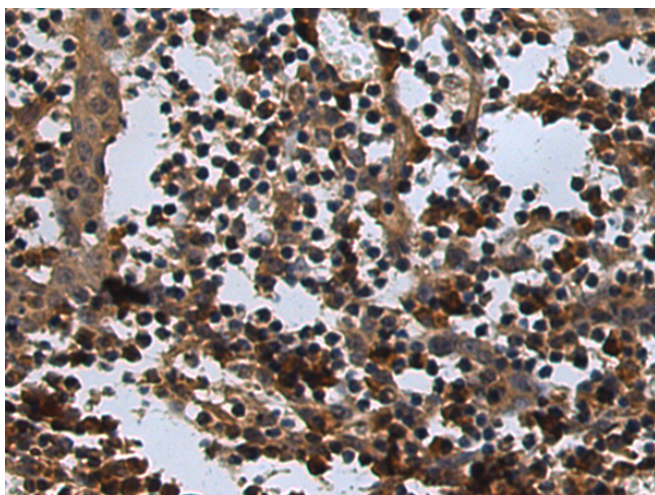
纯化: Antigen affinity purification

种属反应性: Human, Mouse

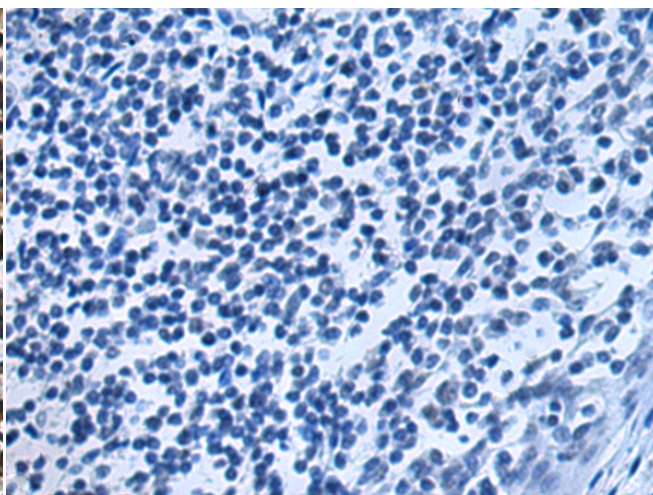
成分: PBS (without Mg²⁺ and Ca²⁺), pH 7.4, 150 mM NaCl, 0.05% Sodium Azide and 40% glycerol

研究领域: Epigenetics and Nuclear Signaling

储存和运输: Store at -20°C. Avoid repeated freezing and thawing



Immunohistochemistry analysis of paraffin embedded Human tonsil tissue using 218479(CXXC1 Antibody) at a dilution of 1/130(Nucleus and Cytoplasm).



In comparison with the IHC on the left, the same paraffin-embedded Human tonsil tissue is first treated with the fusion protein and then with 218479(Anti-CXXC1 Antibody) at dilution 1/130.