

## CXCR6 RABBIT PAB

货号: N225016

产品全名: CXCR6 兔多抗

基因符号 CXCR6; BONZO; STRL33; TYMSTR; C-X-C chemokine receptor type 6; CXC-R6; CXCR-6; CDw186; G-protein coupled receptor STRL33; G-protein coupled receptor bonzo; CD186

**UNIPROT ID:** O00574

背景: Receptor for the C-X-C chemokine CXCL16.

抗原: The antiserum was produced against synthesized peptide derived from the N-terminal region of human CXCR6. AA range:1-50

经过测试的应用: WB,IHC-P,ELISA

推荐稀释比: WB: 1/500-1/1000 IHC: 1/50-1/100 ELISA: 1/10000

种属反应性: Rabbit

克隆性: Rabbit Polyclonal

分子量: Calculated MW: 39 kDa; Observed MW: 39 kDa

亚型: IgG

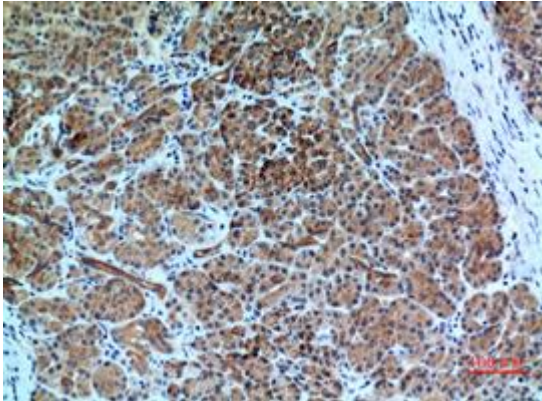
纯化: Affinity Purified

种属反应性: Human

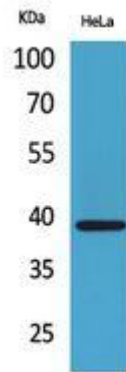
成分: PBS (without Mg<sup>2+</sup> and Ca<sup>2+</sup>), pH 7.3 containing 50% glycerol, 0.5% BSA and 0.02% sodium azide

研究领域: Microbiology

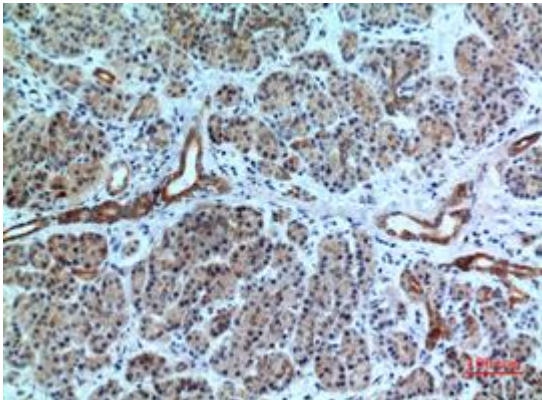
储存和运输: Store at -20°C. Avoid repeated freezing and thawing



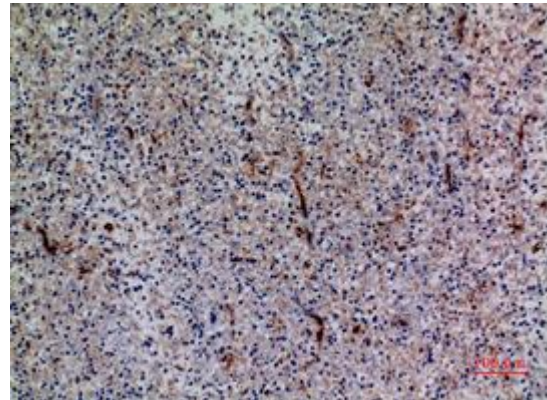
Immunohistochemistry analysis of paraffin-embedded Human pancreas using CXCR6 antibody. High-pressure and temperature Sodium Citrate pH 6.0 was used for antigen retrieval.



Western blot analysis of CXCR6 in HeLa lysates using CXCR6 antibody.



Immunohistochemistry analysis of paraffin-embedded Human pancreas using CXCR6 antibody. High-pressure and temperature Sodium Citrate pH 6.0 was used for antigen retrieval.



Immunohistochemistry analysis of paraffin-embedded Human spleen using CXCR6 antibody. High-pressure and temperature Sodium Citrate pH 6.0 was used for antigen retrieval.