

CWC27 RABBIT PAB

货号: S220885

产品全名: CWC27 兔多抗

基因符号 RPSKA; NY-CO-10; SDCCAG10; SDCCAG-10

UNIPROT ID: Q6UX04 (Gene Accession - NP_005860)

背景: As part of the spliceosome, plays a role in pre-mRNA splicing (PubMed:29360106). Probable inactive PPIase with no peptidyl-prolyl cis-trans isomerase activity (PubMed:20676357).

抗原: Synthetic peptide of human CWC27

经过测试的应用: ELISA, IHC

推荐稀释比: IHC: 25-100; ELISA: 1000-2000

种属反应性: Rabbit

克隆性: Rabbit Polyclonal

亚型: Immunogen-specific rabbit IgG

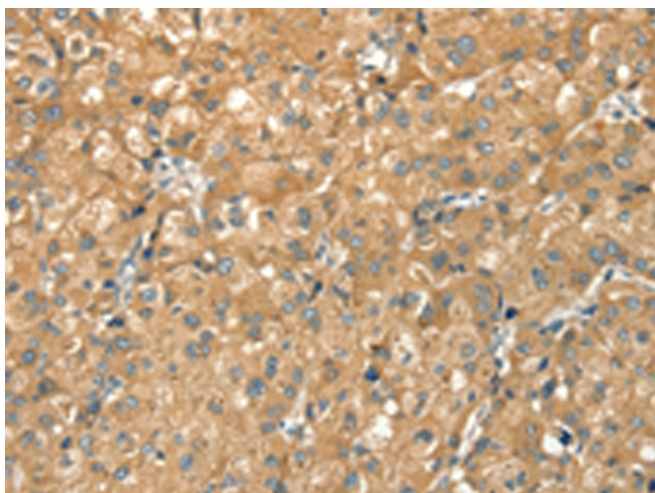
纯化: Antigen affinity purification

种属反应性: Human, Mouse, Rat

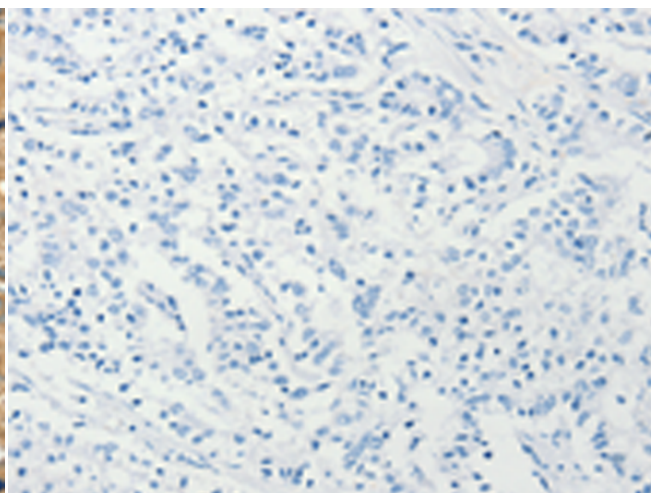
成分: PBS (without Mg²⁺ and Ca²⁺), pH 7.4, 150 mM NaCl, 0.05% Sodium Azide and 40% glycerol

研究领域: Cancer

储存和运输: Store at -20°C. Avoid repeated freezing and thawing



Immunohistochemistry analysis of paraffin embedded Human liver cancer tissue using 220885(CWC27 Antibody) at a dilution of 1/20(Cytoplasm).



In comparison with the IHC on the left, the same paraffin-embedded Human liver cancer tissue is first treated with the synthetic peptide and then with 220885(Anti-CWC27 Antibody) at dilution 1/20.