

## CULLIN 3 RABBIT PAB

货号: N225926

产品全名: Cullin 3 兔多抗

基因符号 CUL3; KIAA0617; Cullin-3; CUL-3

**UNIPROT ID:** Q13618

**背景:** Core component of multiple cullin-RING-based BCR (BTB-CUL3-RBX1) E3 ubiquitin-protein ligase complexes which mediate the ubiquitination and subsequent proteasomal degradation of target proteins. As a scaffold protein may contribute to catalysis through positioning of the substrate and the ubiquitin-conjugating enzyme.

**抗原:** A synthesized peptide derived from human Cullin 3

**经过测试的应用:** WB,IP,FC

**推荐稀释比:** WB: 1/500-1/1000 IP: 1/20 FC: 1/50-1/100

**种属反应性:** Rabbit

**克隆性:** Rabbit Polyclonal

**分子量:** Calculated MW: 89 kDa; Observed MW: 89 kDa

**亚型:** IgG

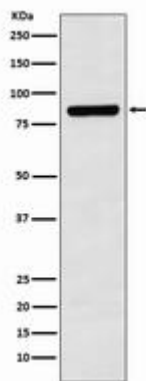
**纯化:** Affinity Chromatography

**种属反应性:** Human, Mouse and Rat

**成分:** PBS (without Mg<sup>2+</sup> and Ca<sup>2+</sup>), pH 7.3 containing 50% glycerol, 0.5% BSA and 0.02% sodium azide

**研究领域:** Cell Biology

**储存和运输:** Store at -20°C. Avoid repeated freezing and thawing



Western blot analysis of Cullin 3 in SH-SY5Y lysates using Cullin 3 antibody.