

CULLIN 3 RABBIT MAB

货号: N262080

产品全名: Cullin 3 兔单克隆抗体

基因符号 CUL3; KIAA0617; Cullin-3; CUL-3

UNIPROT ID: Q13618

背景: Core component of multiple cullin-RING-based BCR (BTB-CUL3-RBX1) E3 ubiquitin-protein ligase complexes which mediate the ubiquitination and subsequent proteasomal degradation of target proteins. As a scaffold protein may contribute to catalysis through positioning of the substrate and the ubiquitin-conjugating enzyme.

抗原: A synthetic peptide of human Cullin 3

经过测试的应用: WB,IP

推荐稀释比: WB: 1/500-1/1000 IP: 1/20

种属反应性: Rabbit

克隆性: Rabbit Monoclonal

克隆编号: R09-4D1

分子量: Calculated MW: 89 kDa; Observed MW: 89 kDa

亚型: IgG

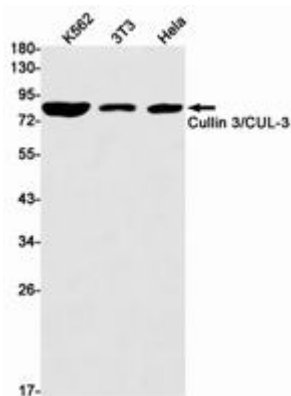
纯化: Affinity Purified

种属反应性: Human, Mouse and Rat

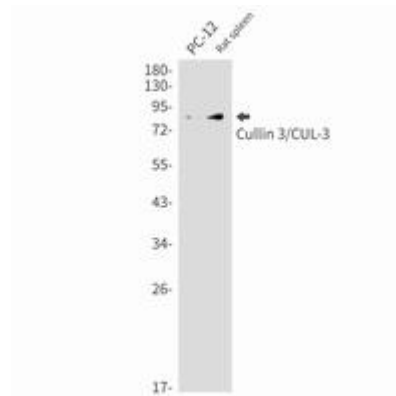
成分: PBS (without Mg²⁺ and Ca²⁺), pH 7.3 containing 50% glycerol, 0.5% BSA and 0.02% sodium azide

研究领域: Cell Biology

储存和运输: Store at -20°C. Avoid repeated freezing and thawing



Western blot analysis of Cullin 3/CUL3 in K562, 3T3, HeLa lysates using Cullin 3/CUL3 antibody.



Western blot analysis of Cullin 3/CUL3 in PC-12, rat spleen lysates using Cullin 3 antibody.