

CUL7 RABBIT PAB

货号: S216453

产品全名: CUL7 兔多抗

基因符号: 3M1; KIAA0076; dJ20C7.5

UNIPROT ID: Q14999 (Gene Accession - BC033647)

背景: The protein encoded by this gene is a component of an E3 ubiquitin-protein ligase complex. The encoded protein interacts with TP53, CUL9, and FBXW8 proteins. Defects in this gene are a cause of 3M syndrome type 1 (3M1). Two transcript variants encoding different isoforms have been found for this gene. CUL-7 is highly expressed in fetal kidney and adult skeletal muscle in addition to abundant expression in fetal brain, and adult pancreas, kidney, placenta and heart. It is also detected in trophoblasts, lymphoblasts, osteoblasts, chondrocytes and skin fibroblasts.

抗原: Fusion protein of human CUL7

经过测试的应用: ELISA, WB, IHC

推荐稀释比: IHC: 25-100;WB: 200-1000;ELISA: 5000-10000

种属反应性: Rabbit

克隆性: Rabbit Polyclonal

亚型: Immunogen-specific rabbit IgG

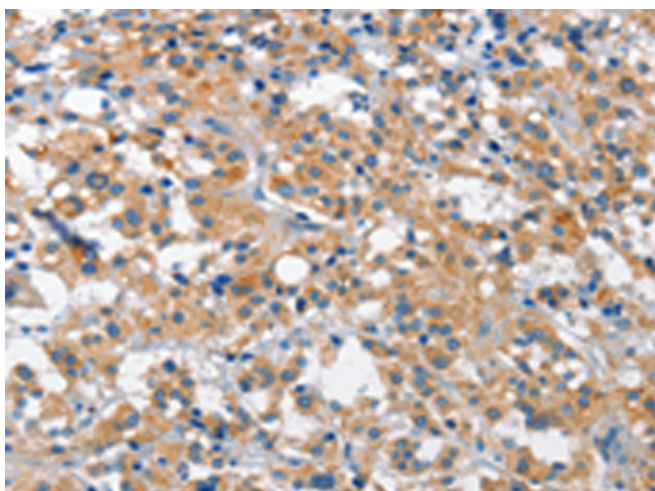
纯化: Antigen affinity purification

种属反应性: Human, Rat

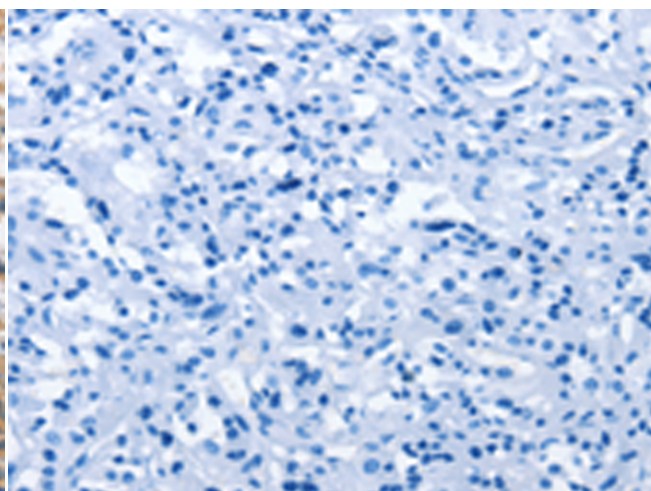
成分: PBS (without Mg²⁺ and Ca²⁺), pH 7.4, 150 mM NaCl, 0.05% Sodium Azide and 40% glycerol

研究领域: Cell Biology

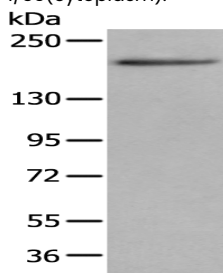
储存和运输: Store at -20°C. Avoid repeated freezing and thawing



Immunohistochemistry analysis of paraffin embedded Human thyroid cancer tissue using 216453(CUL7 Antibody) at a dilution of 1/35(cytoplasm).



In comparison with the IHC on the left, the same paraffin-embedded Human thyroid cancer tissue is first treated with the fusion protein and then with 216453(Anti-CUL7 Antibody) at dilution 1/35.



Gel: 6%SDS-PAGE, Lysate: 40 µg;

Lane: A431 cell;

Primary antibody: 216453(CUL7 Antibody) at dilution 1/200;

Secondary antibody: Goat anti rabbit IgG at 1/8000 dilution;

Exposure time: 3 seconds