

CUL5 RABBIT PAB

货号: S216452

产品全名: CUL5 兔多抗

基因符号: CUL-5; VACM1; VACM-1

UNIPROT ID: Q93034 (Gene Accession - BC063306)

背景: Enables ubiquitin protein ligase binding activity. Predicted to be involved in SCF-dependent proteasomal ubiquitin-dependent protein catabolic process and protein ubiquitination. Predicted to act upstream of or within cerebral cortex radially oriented cell migration and radial glia guided migration of Purkinje cell. Located in site of DNA damage. Part of Cul5-RING ubiquitin ligase complex.

抗原: Fusion protein of human CUL5

经过测试的应用: ELISA, IHC

推荐稀释比: IHC: 50-200; ELISA: 5000-10000

种属反应性: Rabbit

克隆性: Rabbit Polyclonal

亚型: Immunogen-specific rabbit IgG

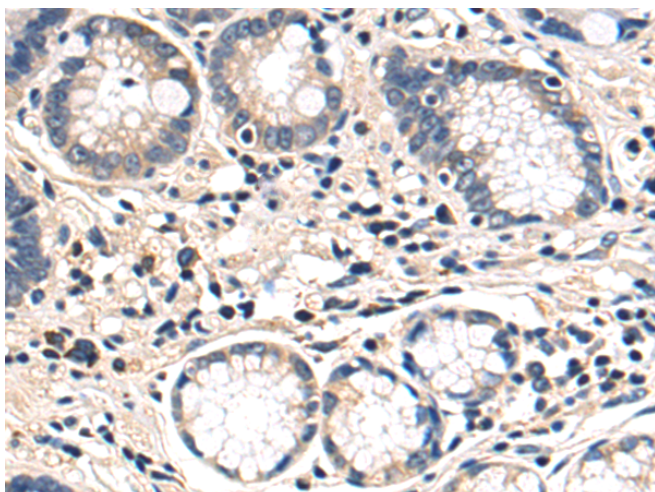
纯化: Antigen affinity purification

种属反应性: Human, Mouse, Rat

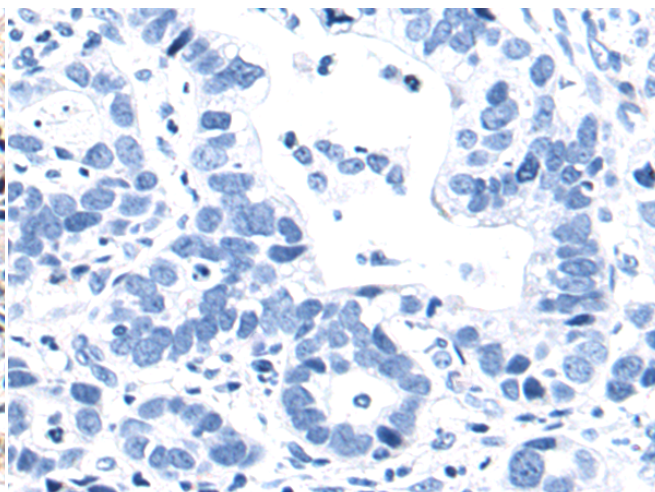
成分: PBS (without Mg²⁺ and Ca²⁺), pH 7.4, 150 mM NaCl, 0.05% Sodium Azide and 40% glycerol

研究领域: Cell Biology

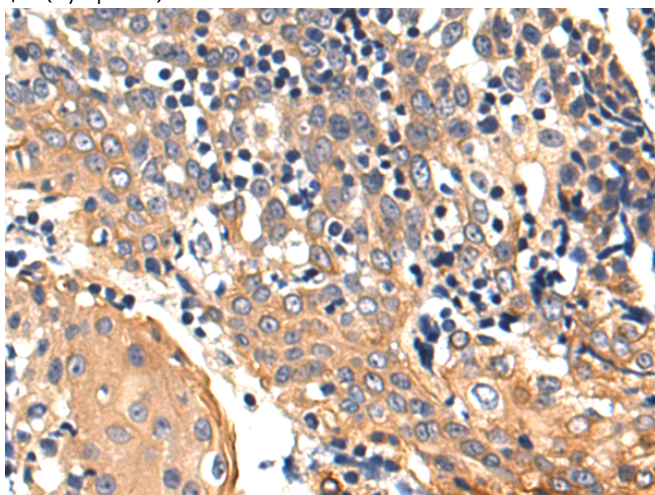
储存和运输: Store at -20°C. Avoid repeated freezing and thawing



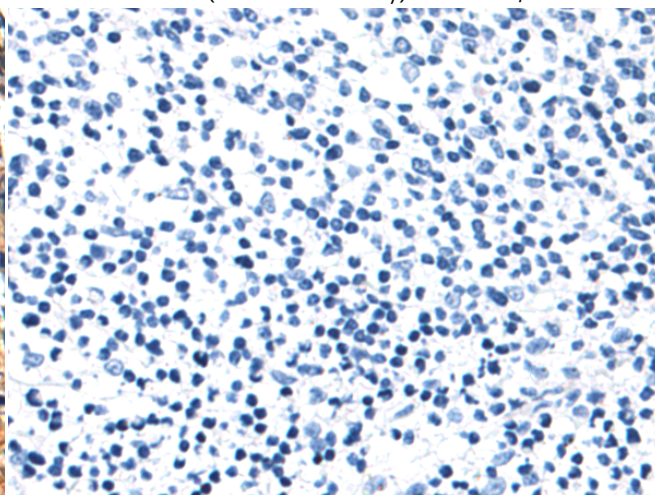
Immunohistochemistry analysis of paraffin embedded Human gastric cancer tissue using 216452(CUL5 Antibody) at a dilution of 1/80(Cytoplasm).



In comparison with the IHC on the left, the same paraffin-embedded Human gastric cancer tissue is first treated with the fusion protein and then with 216452(Anti-CUL5 Antibody) at dilution 1/80.



The image on the left is immunohistochemistry of paraffin-embedded Human tonsil tissue using 216452(Anti-CUL5 Antibody) at a dilution of 1/80.



In comparison with the IHC on the left, the same paraffin-embedded Human tonsil tissue is first treated with fusion protein and then with D220491(Anti-CUL5 Antibody) at dilution 1/80.



Product Description

Pioneering GTPase and Oncogene Product Development since 2010
