

CUL4A RABBIT PAB

货号: S219724

产品全名: CUL4A 兔多抗

基因符号

UNIPROT ID: Q13619 (Gene Accession - NP_001008895)

背景: CUL4A is the ubiquitin ligase component of a multimeric complex involved in the degradation of DNA damage-response proteins.

抗原: Synthetic peptide of human CUL4A

经过测试的应用: ELISA, WB, IHC

推荐稀释比: IHC: 40-200;WB: 500-2000;ELISA: 5000-10000

种属反应性: Rabbit

克隆性: Rabbit Polyclonal

亚型: Immunogen-specific rabbit IgG

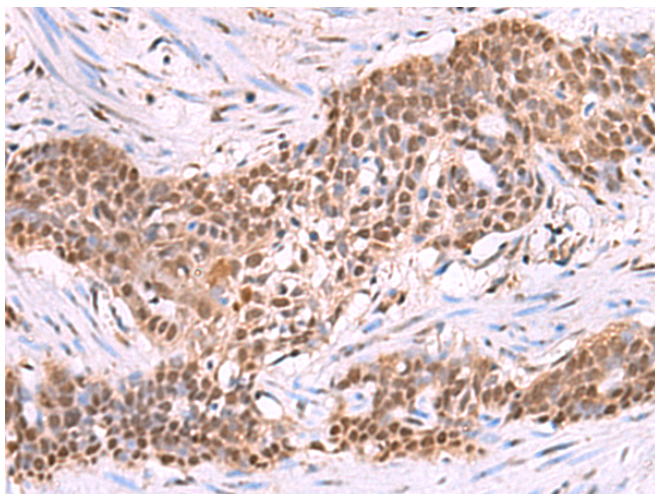
纯化: Antigen affinity purification

种属反应性: Human, Mouse

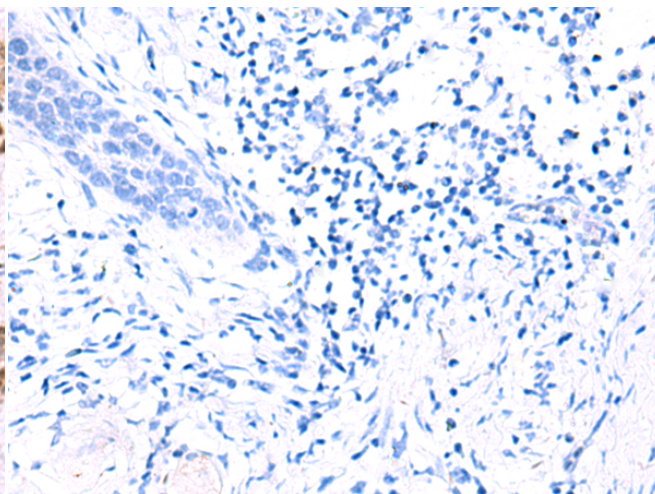
成分: PBS (without Mg²⁺ and Ca²⁺), pH 7.4, 150 mM NaCl, 0.05% Sodium Azide and 40% glycerol

研究领域: Cell Biology

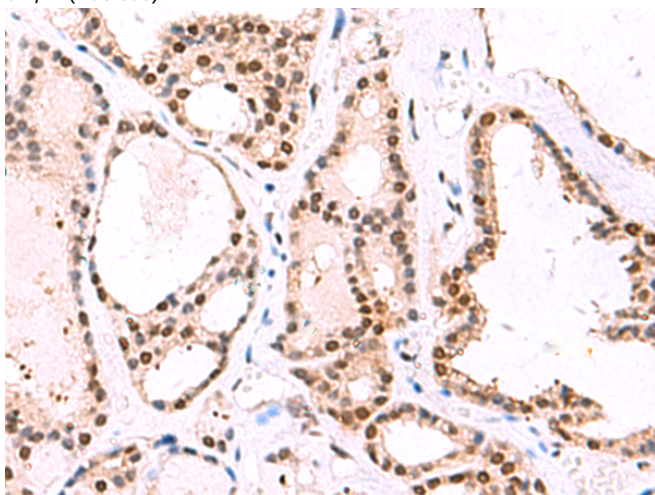
储存和运输: Store at -20°C. Avoid repeated freezing and thawing



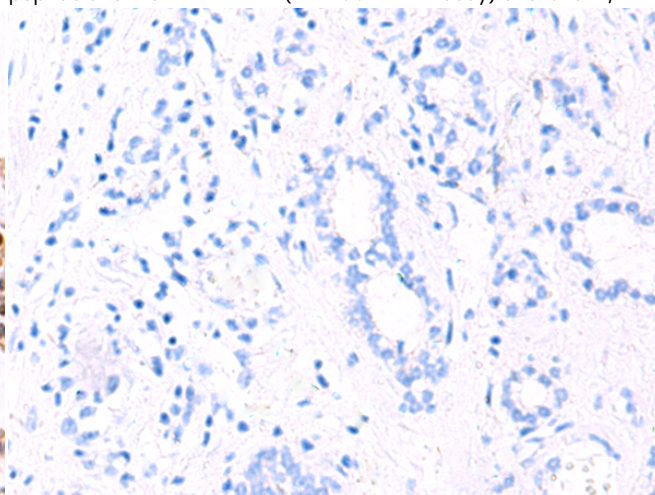
Immunohistochemistry analysis of paraffin embedded Human esophagus cancer tissue using 219724(CUL4A Antibody) at a dilution of 1/45(Nucleus).



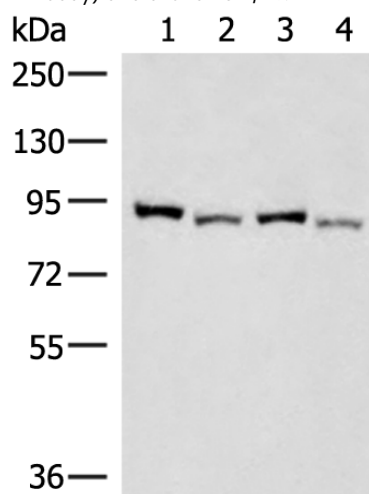
In comparison with the IHC on the left, the same paraffin-embedded Human esophagus cancer tissue is first treated with the synthetic peptide and then with 219724(Anti-CUL4A Antibody) at dilution 1/45.



The image on the left is immunohistochemistry of paraffin-embedded Human thyroid cancer tissue using 219724(Anti-CUL4A Antibody) at a dilution of 1/45.



In comparison with the IHC on the left, the same paraffin-embedded Human thyroid cancer tissue is first treated with synthetic peptide and then with D260215(Anti-CUL4A Antibody) at dilution 1/45.



Gel: 6%SDS-PAGE, Lysate: 40 µg;
Lane 1-4: HepG2, HeLa, 231 cell and Human fetal brain tissue lysates;
Primary antibody: 219724(CUL4A Antibody) at dilution 1/500;
Secondary antibody: Goat anti rabbit IgG at 1/8000 dilution;
Exposure time: 3 seconds



Product Description

Pioneering GTPase and Oncogene Product Development since 2010
