

## CTSC RABBIT PAB

货号: S220427

产品全名: CTSC 兔多抗

基因符号: JP; HMS; JPD; PLS; CPPI; DPP1; DPP2; PALS; DPP-I; PDONI

**UNIPROT ID:** P53634 (Gene Accession - NP\_001107645)

**背景:** The protein encoded by this gene, a member of the peptidase C1 family, is a lysosomal cysteine proteinase that appears to be a central coordinator for activation of many serine proteinases in immune/inflammatory cells. It is composed of a dimer of disulfide-linked heavy and light chains, both produced from a single protein precursor, and a residual portion of the propeptide acts as an intramolecular chaperone for the folding and stabilization of the mature enzyme. This enzyme requires chloride ions for activity and can degrade glucagon. Defects in the encoded protein have been shown to be a cause of Papillon-Lefevre syndrome, an autosomal recessive disorder characterized by palmoplantar keratosis and periodontitis.

**抗原:** Synthetic peptide of human CTSC

**经过测试的应用:** ELISA, WB, IHC

**推荐稀释比:** IHC: 15-50; WB: 200-1000; ELISA: 1000-2000

**种属反应性:** Rabbit

**克隆性:** Rabbit Polyclonal

**亚型:** Immunogen-specific rabbit IgG

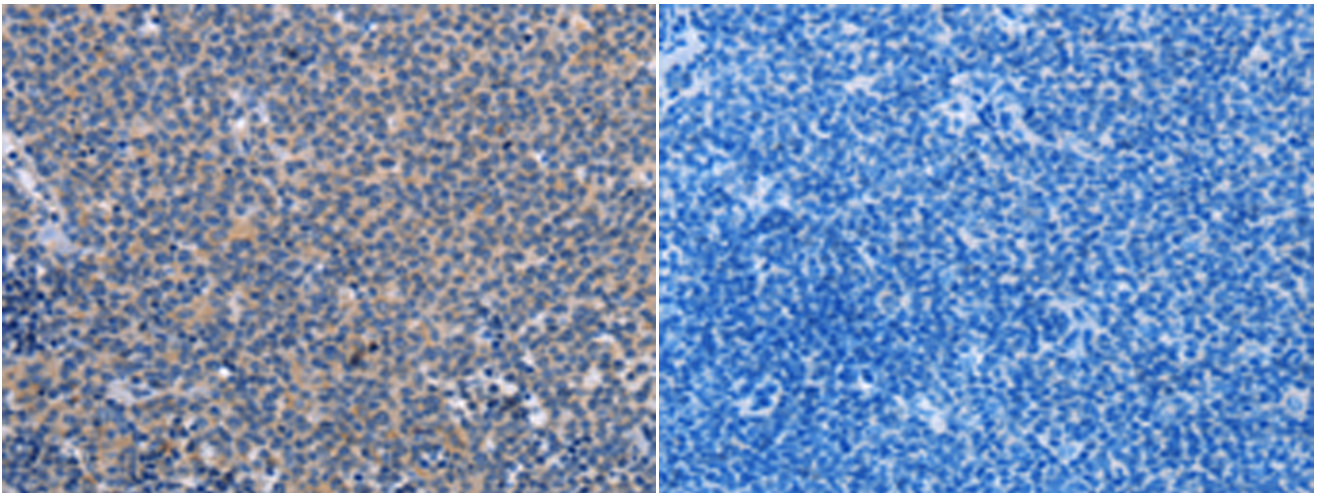
**纯化:** Antigen affinity purification

**种属反应性:** Human

**成分:** PBS (without Mg<sup>2+</sup> and Ca<sup>2+</sup>), pH 7.4, 150 mM NaCl, 0.05% Sodium Azide and 40% glycerol

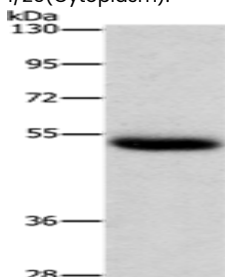
**研究领域:** Cell Biology

**储存和运输:** Store at -20°C. Avoid repeated freezing and thawing



Immunohistochemistry analysis of paraffin embedded Human Lymphoma tissue using 220427(CTSC Antibody) at a dilution of 1/25(Cytoplasm).

In comparison with the IHC on the left, the same paraffin-embedded Human Lymphoma tissue is first treated with the synthetic peptide and then with 220427(Anti-CTSC Antibody) at dilution 1/25.



Gel: 6%SDS-PAGE, Lysate: 40 µg;

Lane: Human placenta tissue;

Primary antibody: 220427(CTSC Antibody) at dilution 1/350;

Secondary antibody: Goat anti rabbit IgG at 1/8000 dilution;

Exposure time: 30 seconds