

CTRB1 RABBIT PAB

货号: S218853

产品全名: CTRB1 兔多抗

基因符号: CTRB

UNIPROT ID: P17538 (Gene Accession - BC005385)

背景: This gene encodes a member of the serine protease family of enzymes and forms a principal precursor of the pancreatic proteolytic enzymes. The encoded preproprotein is synthesized in the acinar cells of the pancreas and secreted into the small intestine where it undergoes proteolytic activation to generate a functional enzyme. This gene is located adjacent to a related chymotrypsinogen gene. This gene encodes distinct isoforms, some or all of which may undergo similar processing to generate the mature protein.

抗原: Fusion protein of human CTRB1

经过测试的应用: ELISA, WB, IHC

推荐稀释比: IHC: 40-200;WB: 1000-5000;ELISA: 5000-10000

种属反应性: Rabbit

克隆性: Rabbit Polyclonal

亚型: Immunogen-specific rabbit IgG

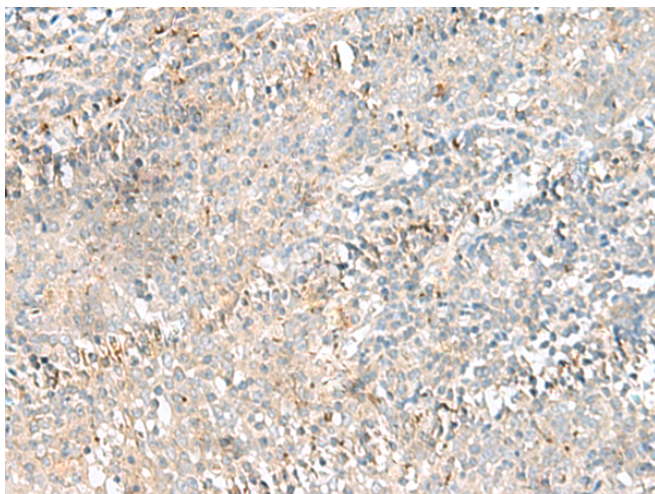
纯化: Antigen affinity purification

种属反应性: Human, Mouse, Rat

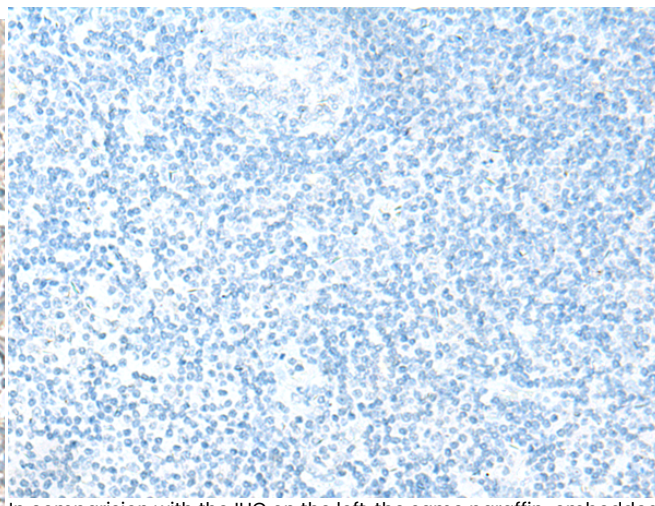
成分: PBS (without Mg²⁺ and Ca²⁺), pH 7.4, 150 mM NaCl, 0.05% Sodium Azide and 40% glycerol

研究领域: Cell Biology

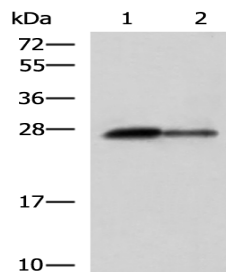
储存和运输: Store at -20°C. Avoid repeated freezing and thawing



Immunohistochemistry analysis of paraffin embedded Human tonsil tissue using 218853(CTRBI Antibody) at a dilution of 1/55(Secreted).



In comparison with the IHC on the left, the same paraffin-embedded Human tonsil tissue is first treated with the fusion protein and then with 218853(Anti-CTRBI Antibody) at dilution 1/55.



Gel: 12%SDS-PAGE, Lysate: 40 µg;

Lane 1-2: Rat pancreas tissue and Mouse pancreas tissue lysates;

Primary antibody: 218853(CTRBI Antibody) at dilution 1/1000;

Secondary antibody: HRP-conjugated Goat anti rabbit IgG at 1/5000 dilution;

Exposure time: 3 seconds