

CTNNAL1 RABBIT PAB

货号: S210192

产品全名: CTNNAL1 兔多抗

基因符号 ACRP; CLLP; alpha-CATU

UNIPROT ID: Q9UBT7 (Gene Accession - BC117208)

背景: CTNNAL1 (catenin (cadherin-associated protein), alpha-like 1), also known as CLLP or alpha-CATU, is a 734 amino acid cytoplasmic peripheral membrane protein belonging to the vinculin/alpha-catenin family. Expressed at high levels in adrenal gland and present at lower levels in neural tissues, CTNNAL1 may be involved in the regulation of Rho pathway signaling by providing a scaffold for the Lbc Rho guanine nucleotide exchange factor 1 (RhoGEF p115). It is suggested that CTNNAL1 is down-regulated in pancreatic carcinoma undergoing differentiation and apoptosis. Existing as three isoforms produced by alternative splicing events, CTNNAL1 may contribute to the wound repair and proliferation of human bronchial epithelial cells (HBEC).

抗原: Fusion protein of human CTNNAL1

经过测试的应用: ELISA, IHC

推荐稀释比: IHC: 30-150; ELISA: 5000-10000

种属反应性: Rabbit

克隆性: Rabbit Polyclonal

亚型: Immunogen-specific rabbit IgG

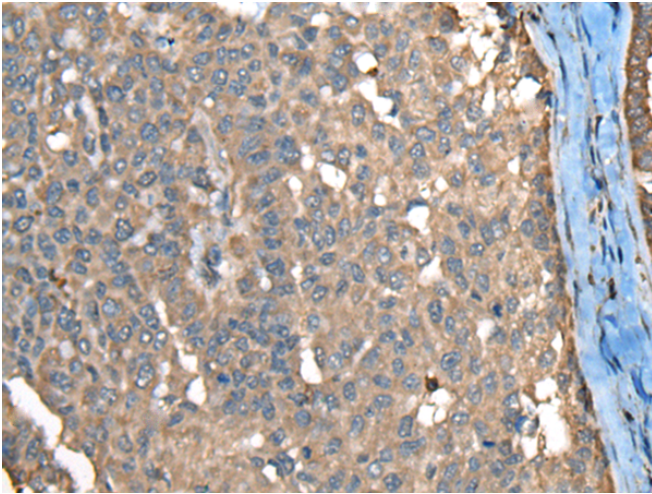
纯化: Antigen affinity purification

种属反应性: Human, Mouse

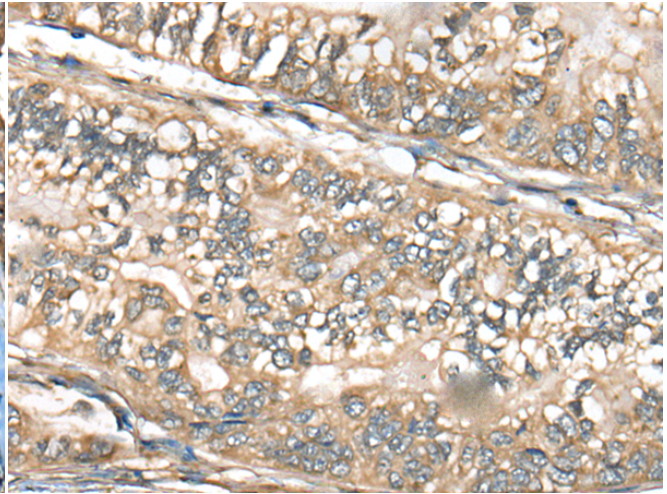
成分: PBS (without Mg²⁺ and Ca²⁺), pH 7.4, 150 mM NaCl, 0.05% Sodium Azide and 40% glycerol

研究领域: Signal Transduction

储存和运输: Store at -20°C. Avoid repeated freezing and thawing



Immunohistochemistry analysis of paraffin-embedded Human liver cancer tissue using 210192(CTNNAL1 Antibody) at a dilution of 1/30(Cytoplasm and Cell membrane).



Immunohistochemistry analysis of paraffin-embedded Human gastric cancer tissue using 210192(Anti-CTNNAL1 Antibody) at a dilution of 1/30.