

## CTNNA1 RABBIT MAB

货号: N261824

产品全名: CTNNA1 兔单克隆抗体

基因符号 Catenin alpha-1; Alpha E-catenin; Cadherin-associated protein; Renal carcinoma antigen NY-REN-13

**UNIPROT ID:** P35221

**背景:** Adherens junctions are dynamic structures that form cell-cell contacts and are important in development, differentiation, tissue integrity, morphology and cell polarity. They are composed of the transmembrane proteins, cadherins, which bind cadherins on adjacent cells in a calcium-dependent manner.

**抗原:** A synthetic peptide of human alpha 1 Catenin

**经过测试的应用:** WB,IP

**推荐稀释比:** WB: 1/500-1/1000 IP: 1/20

**种属反应性:** Rabbit

**克隆性:** Rabbit Monoclonal

**克隆编号:** R07-7D5

**分子量:** Calculated MW: 100 kDa; Observed MW: 100 kDa

**亚型:** IgG

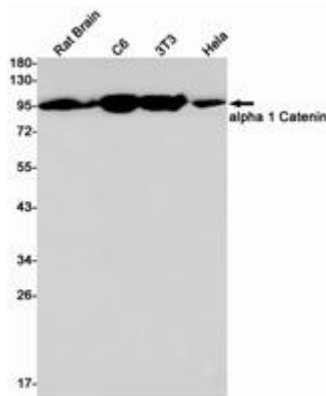
**纯化:** Affinity Purified

**种属反应性:** Human, Mouse and Rat

**成分:** PBS (without Mg<sup>2+</sup> and Ca<sup>2+</sup>), pH 7.3 containing 50% glycerol, 0.5% BSA and 0.02% sodium azide

**研究领域:** Cell Biology

**储存和运输:** Store at -20°C. Avoid repeated freezing and thawing



Western blot analysis of alpha 1 Catenin in rat Brain, C6, 3T3, HeLa lysates using CTNNA1 antibody.



# Product Description

Pioneering GTPase and Oncogene Product Development since 2010

---