

## CTBP1 RABBIT MAB

货号: N263285

产品全名: CTBP1 兔单克隆抗体

基因符号 CTBP1; CTBP; C-terminal-binding protein 1; CtBP1

**UNIPROT ID:** Q13363

背景: Involved in controlling the equilibrium between tubular and stacked structures in the Golgi complex. Functions in brown adipose tissue (BAT) differentiation. Corepressor targeting diverse transcription regulators such as GLIS2. Has dehydrogenase activity.

抗原: A synthetic peptide of human CtBP1

经过测试的应用: WB,IHC-F,IHC-P,ICC/IF,IP

推荐稀释比: WB: 1/500-1/1000 IHC: 1/50-1/100 IF: 1/50-1/200 IP: 1/20

种属反应性: Rabbit

克隆性: Rabbit Monoclonal

克隆编号: R06-4A3

分子量: Calculated MW: 48 kDa; Observed MW: 48 kDa

亚型: IgG

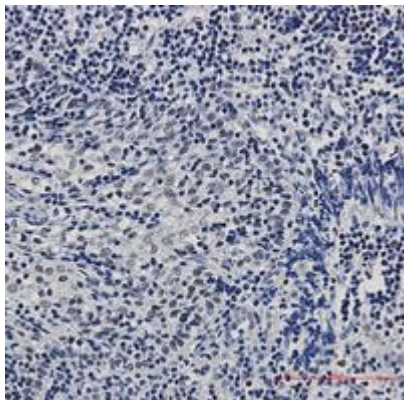
纯化: Affinity Purified

种属反应性: Human

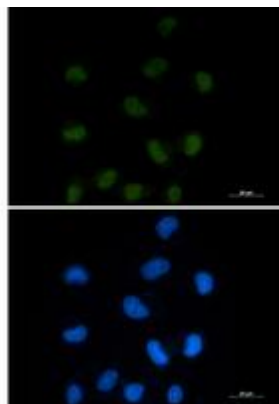
成分: PBS (without Mg<sup>2+</sup> and Ca<sup>2+</sup>), pH 7.3 containing 50% glycerol, 0.5% BSA and 0.02% sodium azide

研究领域: Cell Biology

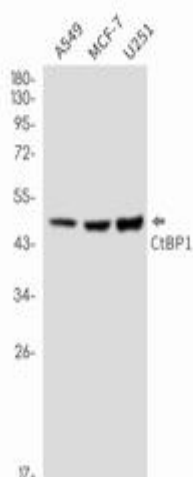
储存和运输: Store at -20°C. Avoid repeated freezing and thawing



Immunohistochemistry analysis of paraffin-embedded Human tonsil using CtBP1 antibody. High-pressure and temperature Sodium Citrate pH 6.0 was used for antigen retrieval.



Immunocytochemistry analysis of CTBP1 (green) in HEPG2 using CTBP1 antibody, and DAPI (blue).



Western blot analysis of CtBP1 in A549, MCF-7, U251 lysates using CtBP1 antibody.