

## CSNK1G1 RABBIT PAB

货号: S221846

产品全名: CSNK1G1 兔多抗

基因符号: CK1gamma1

**UNIPROT ID:** Q9HCP0 (Gene Accession - NP\_071331)

**背景:** This gene encodes a member of the casein kinase I gene family. This family is comprised of serine/threonine kinases that phosphorylate acidic proteins such as caseins. The encoded kinase plays a role in cell cycle checkpoint arrest in response to stalled replication forks by phosphorylating Claspin. A mutation in this gene may be associated with non-syndromic early-onset epilepsy (NSEOE).

**抗原:** Synthetic peptide of human CSNK1G1

**经过测试的应用:** ELISA, IHC

**推荐稀释比:** IHC: 25-100; ELISA: 5000-10000

**种属反应性:** Rabbit

**克隆性:** Rabbit Polyclonal

**亚型:** Immunogen-specific rabbit IgG

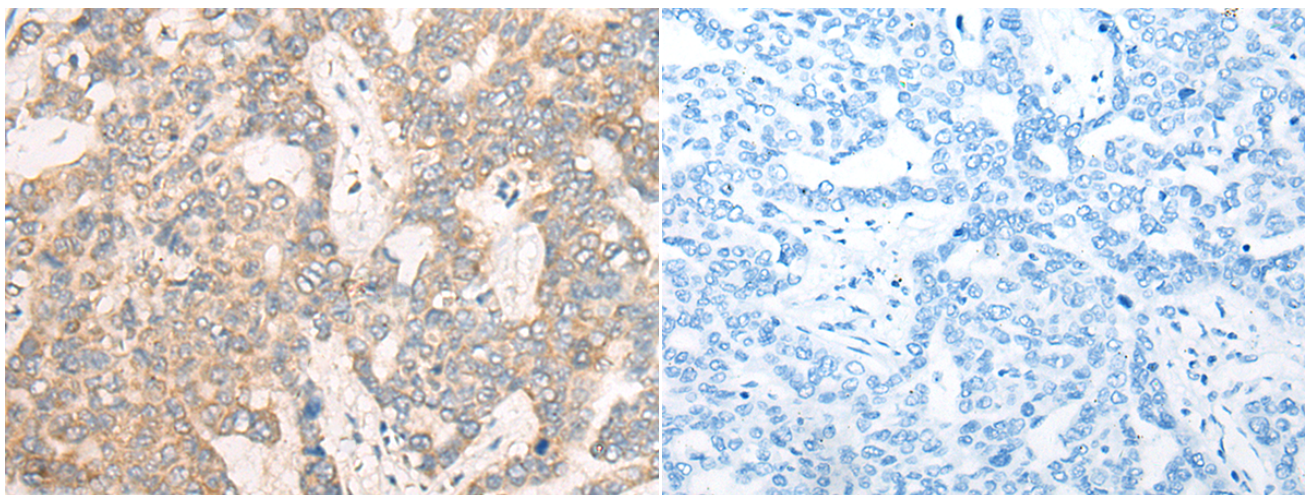
**纯化:** Antigen affinity purification

**种属反应性:** Human, Mouse, Rat

**成分:** PBS (without Mg<sup>2+</sup> and Ca<sup>2+</sup>), pH 7.4, 150 mM NaCl, 0.05% Sodium Azide and 40% glycerol

**研究领域:** Signal Transduction

**储存和运输:** Store at -20°C. Avoid repeated freezing and thawing



Immunohistochemistry analysis of paraffin embedded Human liver cancer tissue using 221846(CSNK1G1 Antibody) at a dilution of 1/35(Cytoplasm).

In comparison with the IHC on the left, the same paraffin-embedded Human liver cancer tissue is first treated with the synthetic peptide and then with 221846(Anti-CSNK1G1 Antibody) at dilution 1/35.