

CSMD1 RABBIT PAB

货号: S220481

产品全名: CSMD1 兔多抗

基因符号: PPP1R24

UNIPROT ID: Q96PZ7 (Gene Accession - NP_150094)

背景: CSMD1 CUB and Sushi multiple domains 1 is a protein that in humans is encoded by the CSMD1 gene. It is a potential tumour suppressor, the deletion of which may result in head and neck carcinomas behaving more aggressively. CSMD1 is part of the complement system that defends against pathogens through either the classical pathway or the alternative pathway. Located primarily in nerve growth cones, CSMD1 blocks the classical pathway of the immune system and is thought to be involved in tumor suppression, as defects in the gene encoding CSMD1 are associated with squamous cell carcinomas.

抗原: Synthetic peptide of human CSMD1

经过测试的应用: ELISA, IHC

推荐稀释比: IHC: 50-200; ELISA: 2000-5000

种属反应性: Rabbit

克隆性: Rabbit Polyclonal

亚型: Immunogen-specific rabbit IgG

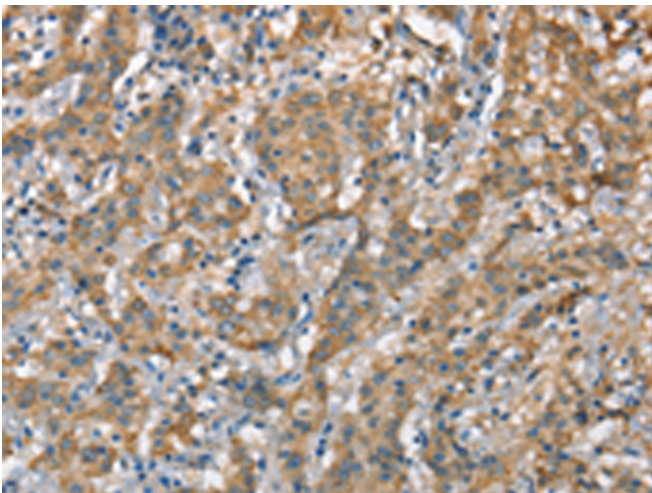
纯化: Antigen affinity purification

种属反应性: Human, Mouse

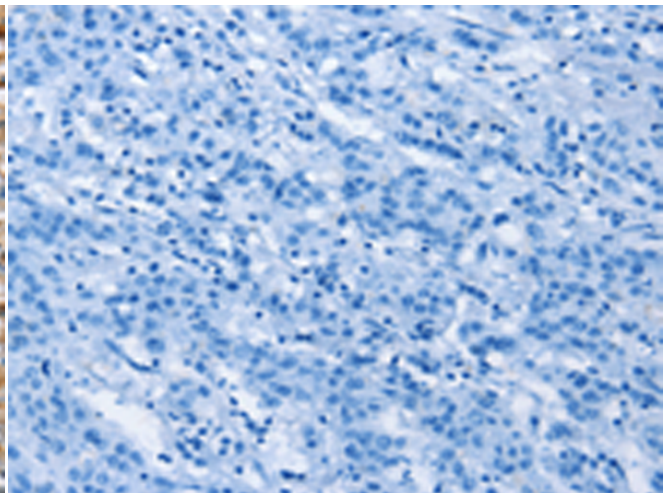
成分: PBS (without Mg²⁺ and Ca²⁺), pH 7.4, 150 mM NaCl, 0.05% Sodium Azide and 40% glycerol

研究领域: Cancer

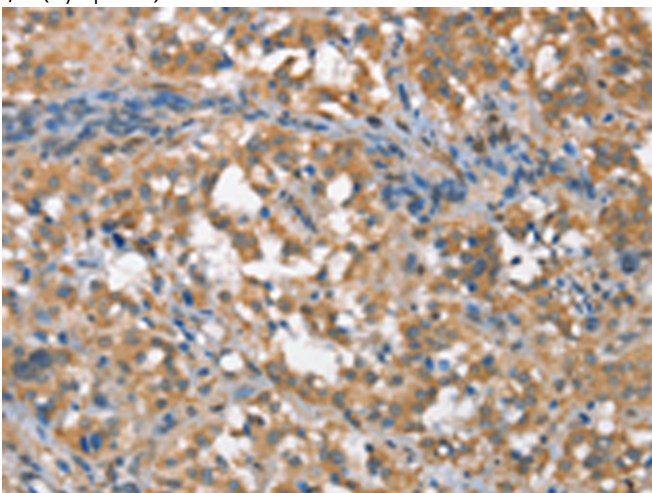
储存和运输: Store at -20°C. Avoid repeated freezing and thawing



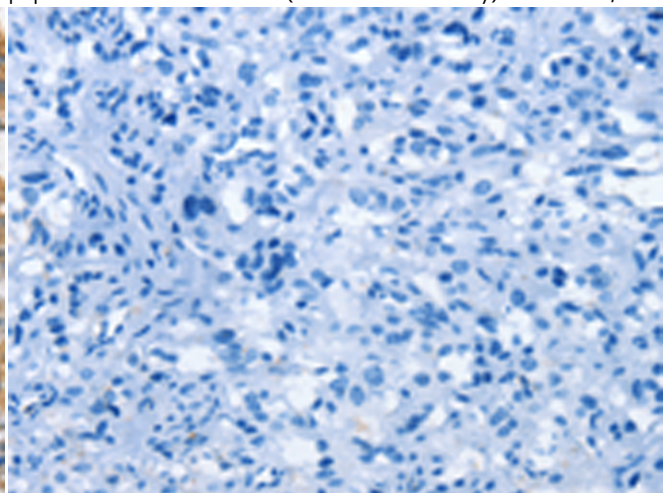
Immunohistochemistry analysis of paraffin embedded Human gastric cancer tissue using 220481(CSMD1 Antibody) at a dilution of 1/40(Cytoplasm).



In comparison with the IHC on the left, the same paraffin-embedded Human gastric cancer tissue is first treated with the synthetic peptide and then with 220481(Anti-CSMD1 Antibody) at dilution 1/40.



The image on the left is immunohistochemistry of paraffin-embedded Human thyroid cancer tissue using 220481(Anti-CSMD1 Antibody) at a dilution of 1/40.



In comparison with the IHC on the left, the same paraffin-embedded Human thyroid cancer tissue is first treated with synthetic peptide and then with D261590(Anti-CSMD1 Antibody) at dilution 1/40.



Product Description

Pioneering GTPase and Oncogene Product Development since 2010
