

CSHL1 RABBIT MAB

货号: N262070

产品全名: CSHL1 兔单克隆抗体

基因符号 Lactogen-like; Chorionic somatomammotropin-like

UNIPROT ID: Q14406

背景: May be a novel gestational hormone required to compensate for absence of other members of the GH/CS cluster during gestation.

抗原: Recombinant protein of human CSHL1

经过测试的应用: WB,IHC-P

推荐稀释比: WB: 1/500-1/1000 IHC: 1/50-1/100

种属反应性: Rabbit

克隆性: Rabbit Monoclonal

克隆编号: R06-9I3

分子量: Calculated MW: 25 kDa; Observed MW: 25 kDa

亚型: IgG

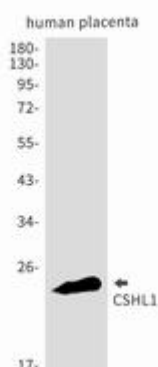
纯化: Affinity Purified

种属反应性: Human

成分: PBS (without Mg²⁺ and Ca²⁺), pH 7.3 containing 50% glycerol, 0.5% BSA and 0.02% sodium azide

研究领域: Signal Transduction

储存和运输: Store at -20°C. Avoid repeated freezing and thawing



Western blot analysis of CSHL1 in Human placenta lysates using CSHL1 antibody.