

## CSF2 RABBIT PAB

货号: S216536

产品全名: CSF2 兔多抗

基因符号: CSF; GMCSF

**UNIPROT ID:** P04141 (Gene Accession - BC113999)

**背景:** The protein encoded by this gene is a cytokine that controls the production, differentiation, and function of granulocytes and macrophages. The active form of the protein is found extracellularly as a homodimer. This gene has been localized to a cluster of related genes at chromosome region 5q31, which is known to be associated with interstitial deletions in the 5q- syndrome and acute myelogenous leukemia. Other genes in the cluster include those encoding interleukins 4, 5, and 13.

**抗原:** Fusion protein of human CSF2

**经过测试的应用:** ELISA, WB, IHC

**推荐稀释比:** IHC: 150-300;WB: 500-2000;ELISA: 5000-10000

**种属反应性:** Rabbit

**克隆性:** Rabbit Polyclonal

**亚型:** Immunogen-specific rabbit IgG

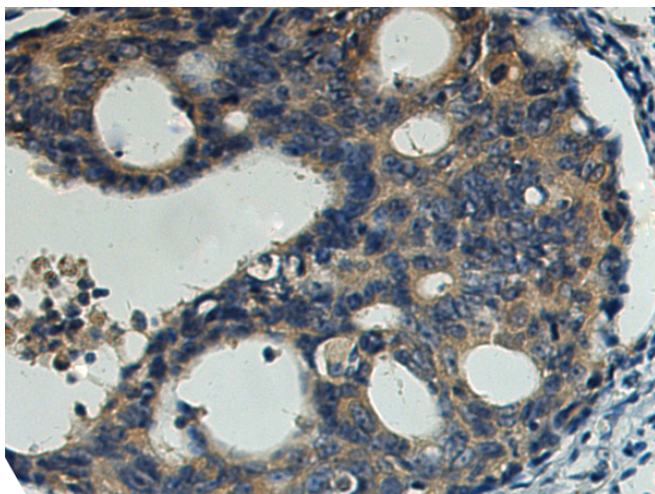
**纯化:** Antigen affinity purification

**种属反应性:** Human

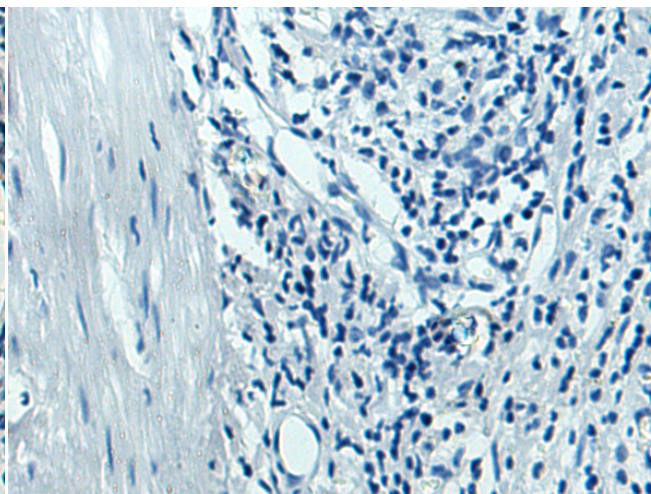
**成分:** PBS (without Mg<sup>2+</sup> and Ca<sup>2+</sup>), pH 7.4, 150 mM NaCl, 0.05% Sodium Azide and 40% glycerol

**研究领域:** Immunology

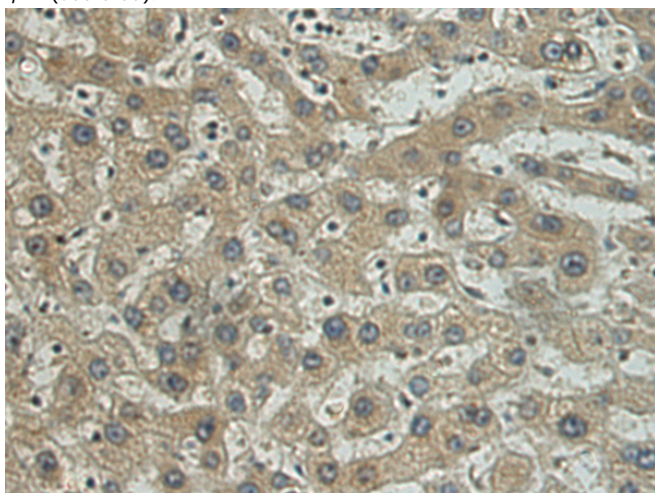
**储存和运输:** Store at -20°C. Avoid repeated freezing and thawing



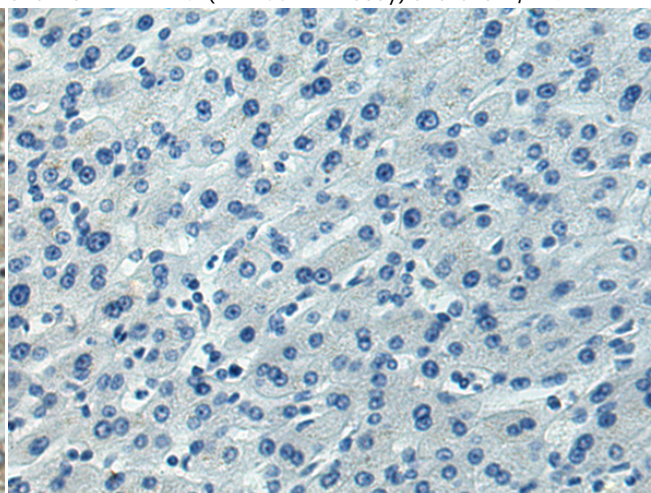
Immunohistochemistry analysis of paraffin embedded Human colorectal cancer tissue using 216536(CSF2 Antibody) at a dilution of 1/150(Secreted).



In comparison with the IHC on the left, the same paraffin-embedded Human colorectal cancer tissue is first treated with the fusion protein and then with 216536(Anti-CSF2 Antibody) at dilution 1/150.

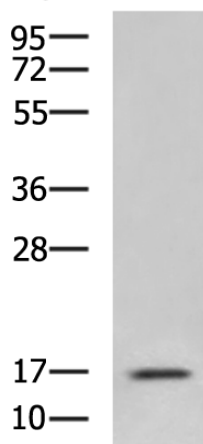


The image on the left is immunohistochemistry of paraffin-embedded Human liver cancer tissue using 216536(Anti-CSF2 Antibody) at a dilution of 1/150.



In comparison with the IHC on the left, the same paraffin-embedded Human liver cancer tissue is first treated with fusion protein and then with D220700(Anti-CSF2 Antibody) at dilution 1/150.

kDa



Gel: 12%SDS-PAGE, Lysate: 40 µg;  
 Lane: HL60 cell lysate;  
 Primary antibody: 216536(CSF2 Antibody) at dilution 1/800;  
 Secondary antibody: HRP-conjugated Goat anti rabbit IgG at 1/5000 dilution;  
 Exposure time: 2 minutes



# Product Description

Pioneering GTPase and Oncogene Product Development since 2010

---