

CSDE1 RABBIT MAB

货号: N263282

产品全名: CSDE1 兔单克隆抗体

基因符号 UNR; DIS155E

UNIPROT ID: O75534

背景: RNA-binding protein involved in translationally coupled mRNA turnover.

抗原: A synthetic peptide of human CSDE1/NRU

经过测试的应用: WB,IHC-F,IHC-P,ICC/IF,IP

推荐稀释比: WB: 1/500-1/1000 IHC: 1/50-1/100 IF: 1/50-1/200 IP: 1/20

种属反应性: Rabbit

克隆性: Rabbit Monoclonal

克隆编号: R02-0E0

分子量: Calculated MW: 89 kDa; Observed MW: 89 kDa

亚型: IgG

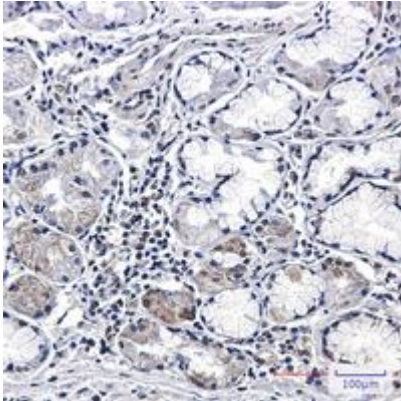
纯化: Affinity Purified

种属反应性: Human

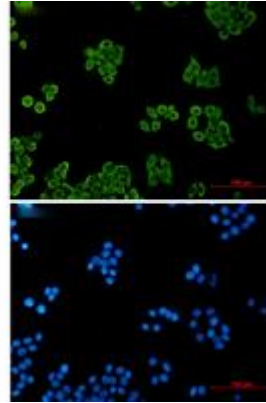
成分: PBS (without Mg²⁺ and Ca²⁺), pH 7.3 containing 50% glycerol, 0.5% BSA and 0.02% sodium azide

研究领域: Epigenetics and Nuclear Signaling

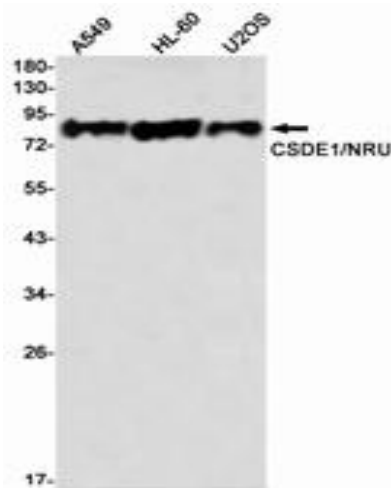
储存和运输: Store at -20°C. Avoid repeated freezing and thawing



Immunohistochemistry analysis of paraffin-embedded Human lung cancer tissue using CSDE1/NRU antibody. High-pressure and temperature Sodium Citrate pH 6.0 was used for antigen retrieval.



Immunocytochemistry analysis of CSDE1 (green) in Hela using CSDE1 antibody, and DAPI (blue).



Western blot analysis of CSDE1/NRU in A549, HL-60, U2OS lysates using CSDE1/NRU antibody.