

CRTH2 RABBIT PAB

货号: N225067

产品全名: CRTH2 兔多抗

基因符号 PTGDR2; CRTH2; DLIR; GPR44; Prostaglandin D2 receptor 2;
Chemoattractant receptor-homologous molecule expressed on Th2 cells;
G-protein coupled receptor 44; CD294

UNIPROT ID: Q9Y5Y4

背景: Receptor for prostaglandin D2 (PGD2).

抗原: The antiserum was produced against synthesized peptide derived from the Internal region of human PTGDR2. AA range:161-210

经过测试的应用: WB,IHC-P,ELISA

推荐稀释比: WB: 1/500-1/1000 IHC: 1/50-1/100 ELISA: 1/10000

种属反应性: Rabbit

克隆性: Rabbit Polyclonal

分子量: Calculated MW: 43 kDa; Observed MW: 43 kDa

亚型: IgG

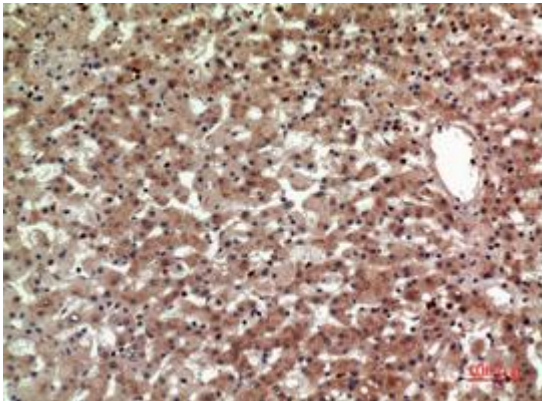
纯化: Affinity Purified

种属反应性: Human,Mouse

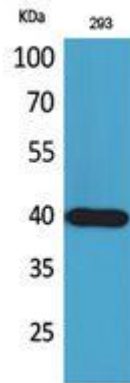
成分: PBS (without Mg²⁺ and Ca²⁺), pH 7.3 containing 50% glycerol, 0.5% BSA and 0.02% sodium azide

研究领域: Signal Transduction

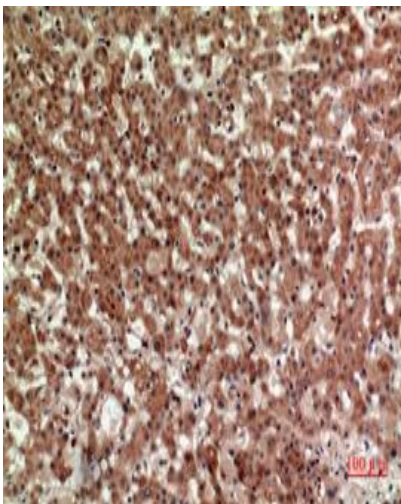
储存和运输: Store at -20°C. Avoid repeated freezing and thawing



Immunohistochemistry analysis of paraffin-embedded Human liver using CRTH2 antibody. High-pressure and temperature Sodium Citrate pH 6.0 was used for antigen retrieval.



Western blot analysis of CRTH2 in Sodium 293 lysates using CRTH2 antibody.



Immunohistochemistry analysis of paraffin-embedded Human liver using CRTH2 antibody. High-pressure and temperature Sodium Citrate pH 6.0 was used for antigen retrieval.