

## CRTC1 MOUSE MAB

货号: N261045

产品全名: CRTC1 小鼠单抗

基因符号 MECT1; TORC1; WAMTP1; FLJ14027; KIAA0616; CRTC1

**UNIPROT ID:** Q6UUV9

**背景:** MECT1 (also known as MucoEpidermoid Carcinoma Translocated 1) functions as a transcriptional coactivator for CREB1, which activates transcription through both consensus and variant cAMP response element (CRE) sites. MECT1 does not appear to modulate CREB1 DNA-binding activity but enhances the interaction of CREB1 with TAF4/TAFII-130. MECT1 translocates with MAML2 (MasterMind-Like Protein 2) to yield a fusion oncogene: t(11;19) (q21;p13). This translocation occurs in mucoepidermoid carcinomas, benign Warthin tumors and clear cell hidradenomas. The novel fusion product that results disrupts the Notch signaling pathway. The fusion protein consists of the N-terminus of MECT1 joined to the C-terminus of MAML2. The reciprocal fusion protein consisting of the N-terminus of MAML2 joined to the C-terminus of MECT1 has been detected in a small number of mucoepidermoid carcinomas. Multiple isoforms have been reported for the MECT1 protein. Tissue specificity: Highly expressed in adult and fetal brain. Located to specific regions such as the prefrontal cortex and cerebellum. Very low expression in other tissues such as heart, spleen, lung, skeletal muscle, salivary gland, ovary and kidney.

**抗原:** Purified recombinant human MECT1 / Torc1 protein fragments expressed in E.coli.

**经过测试的应用:** WB, ICC/IF, IP, FC

**推荐稀释比:** WB: 1/500-1/1000 IF: 1/50-1/200 IP: 1/20 FC: 1/50-1/100

**种属反应性:** Mouse

**克隆性:** Mouse Monoclonal

**克隆编号:** 3D7-E5-D9

**分子量:** Calculated MW: 67 kDa; Observed MW: 78 kDa

**亚型:** IgG2b

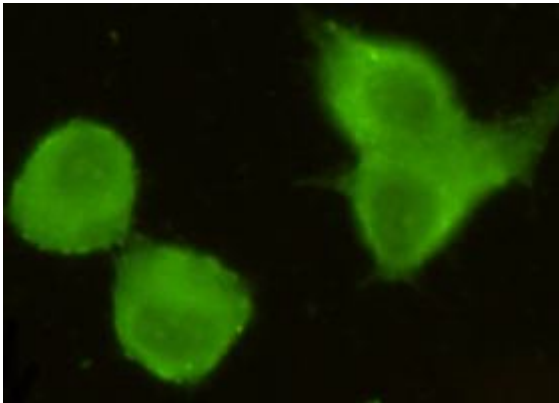
**纯化:** Affinity Purified

**种属反应性:** Human

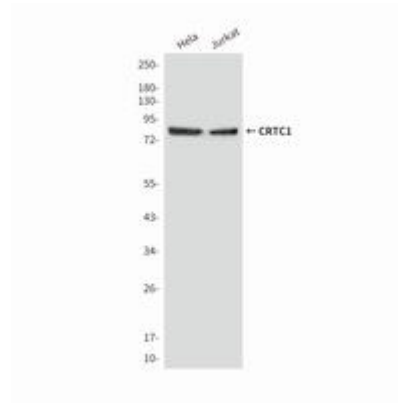
**成分:** PBS (without Mg<sup>2+</sup> and Ca<sup>2+</sup>), pH 7.3 containing 50% glycerol, 0.5% BSA and 0.02% sodium azide

**研究领域:** Signal Transduction

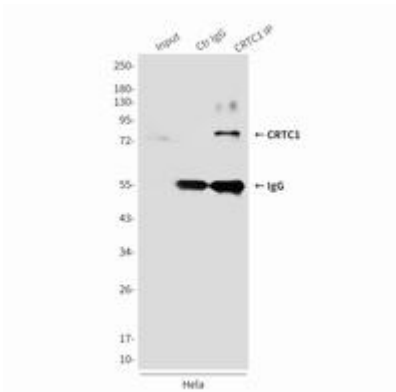
**储存和运输:** Store at -20°C. Avoid repeated freezing and thawing



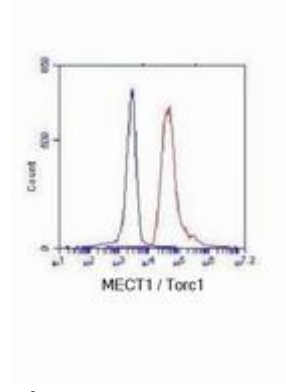
Immunocytochemistry analysis of CRTCl in HeLa using MECT1 / Torc1 antibody.



Western blot analysis of MECT1 / Torc1 in HeLa and Jurkat lysates using MECT1 / Torc1 antibody.



Immunoprecipitation analysis of CRTCl in HeLa cell lysates using MECT1 / Torc1 antibody.



Flow Cytometry analysis of CRTCl in K562 cells using CRTCl antibody (red). Blue line histogram represents the isotype control.