

## CRMP1 RABBIT PAB

货号: S219717

产品全名: CRMP1 兔多抗

基因符号: DRP1; DRP-1; CRMP-1; DPYSL1; ULIP-3

**UNIPROT ID:** Q14194 (Gene Accession - BC000252)

**背景:** This gene encodes a member of a family of cytosolic phosphoproteins expressed exclusively in the nervous system. The encoded protein is thought to be a part of the semaphorin signal transduction pathway implicated in semaphorin-induced growth cone collapse during neural development. Alternative splicing results in multiple transcript variants.

**抗原:** Synthetic peptide of human CRMP1

**经过测试的应用:** ELISA, WB, IHC

**推荐稀释比:** IHC: 50-100; WB: 500-2000; ELISA: 5000-10000

**种属反应性:** Rabbit

**克隆性:** Rabbit Polyclonal

**亚型:** Immunogen-specific rabbit IgG

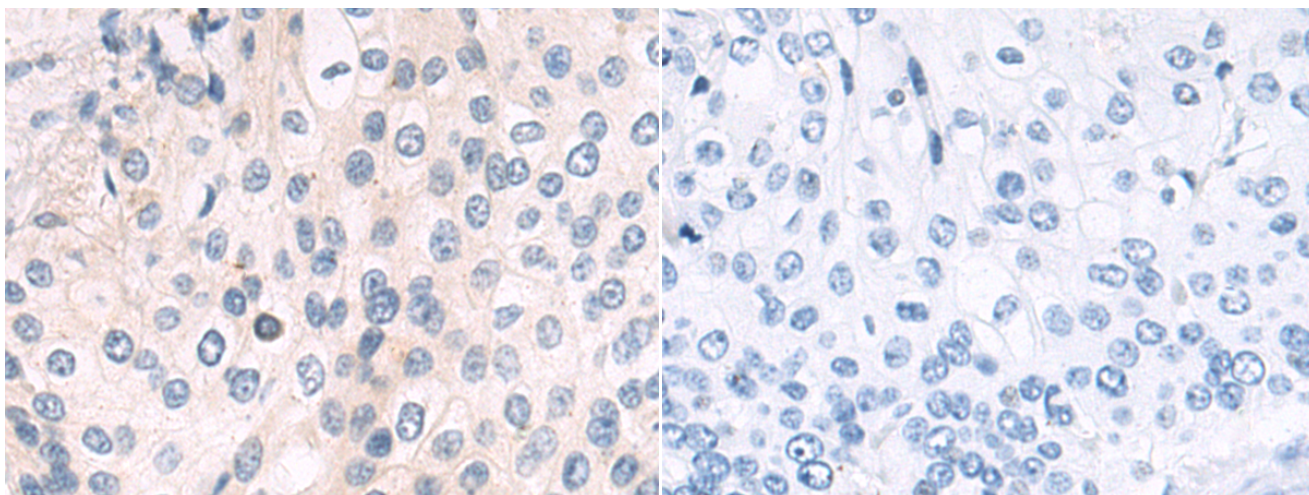
**纯化:** Antigen affinity purification

**种属反应性:** Human, Mouse, Rat

**成分:** PBS (without Mg<sup>2+</sup> and Ca<sup>2+</sup>), pH 7.4, 150 mM NaCl, 0.05% Sodium Azide and 40% glycerol

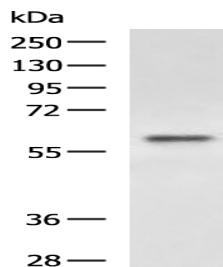
**研究领域:** Neuroscience

**储存和运输:** Store at -20°C. Avoid repeated freezing and thawing



Immunohistochemistry analysis of paraffin embedded Human cervical cancer tissue using 219717 (CRMP1 Antibody) at a dilution of 1/50 (Cytoplasm).

In comparison with the IHC on the left, the same paraffin-embedded Human cervical cancer tissue is first treated with the synthetic peptide and then with 219717 (Anti-CRMP1 Antibody) at dilution 1/50.



Gel: 8% SDS-PAGE, Lysate: 40 µg;

Lane: Mouse brain tissue lysate;

Primary antibody: 219717 (CRMP1 Antibody) at dilution 1/800;

Secondary antibody: HRP-conjugated Goat anti rabbit IgG at 1/5000 dilution;

Exposure time: 5 seconds