

CRM1 RABBIT MAB

货号: N262067

产品全名: CRM1 兔单克隆抗体

基因符号 XPO1; CRM1; Exportin-1; Exp1; Chromosome region maintenance 1 protein homolog

UNIPROT ID: O14980

背景: Mediates the nuclear export of cellular proteins (cargos) bearing a leucine-rich nuclear export signal (NES) and of RNAs. In the nucleus, in association with RANBP3, binds cooperatively to the NES on its target protein and to the GTPase RAN in its active GTP-bound form (Ran-GTP). Docking of this complex to the nuclear pore complex (NPC) is mediated through binding to nucleoporins.

抗原: A synthetic peptide of human CRM1

经过测试的应用: WB,IHC-F,IHC-P,ICC/IF

推荐稀释比: WB: 1/500-1/1000 IHC: 1/50-1/100 IF: 1/50-1/200

种属反应性: Rabbit

克隆性: Rabbit Monoclonal

克隆编号: R01-9J7

分子量: Calculated MW: 123 kDa; Observed MW: 123 kDa

亚型: IgG

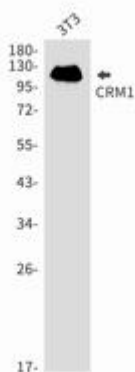
纯化: Affinity Purified

种属反应性: Human, Mouse and Rat

成分: PBS (without Mg²⁺ and Ca²⁺), pH 7.3 containing 50% glycerol, 0.5% BSA and 0.02% sodium azide

研究领域: Signal Transduction

储存和运输: Store at -20°C. Avoid repeated freezing and thawing



Western blot analysis of CRM1 in 3T3 lysates using CRM1 antibody.



Product Description

Pioneering GTPase and Oncogene Product Development since 2010
