

CRLF2 RABBIT PAB

货号: S220469

产品全名: CRLF2 兔多抗

基因符号: CRL2; TSLPR; CRLF2Y

UNIPROT ID: Q9HC73 (Gene Accession - NP_071431)

背景: This gene encodes a member of the type I cytokine receptor family. The encoded protein is a receptor for thymic stromal lymphopoietin (TSLP). Together with the interleukin 7 receptor (IL7R), the encoded protein and TSLP activate STAT3, STAT5, and JAK2 pathways, which control processes such as cell proliferation and development of the hematopoietic system.

抗原: Synthetic peptide of human CRLF2

经过测试的应用: ELISA, WB, IHC

推荐稀释比: IHC: 50-200;WB: 200-1000;ELISA: 1000-2000

种属反应性: Rabbit

克隆性: Rabbit Polyclonal

亚型: Immunogen-specific rabbit IgG

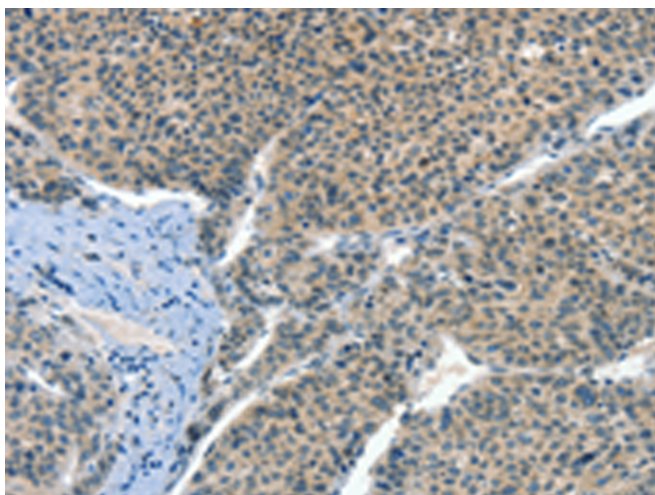
纯化: Antigen affinity purification

种属反应性: Human

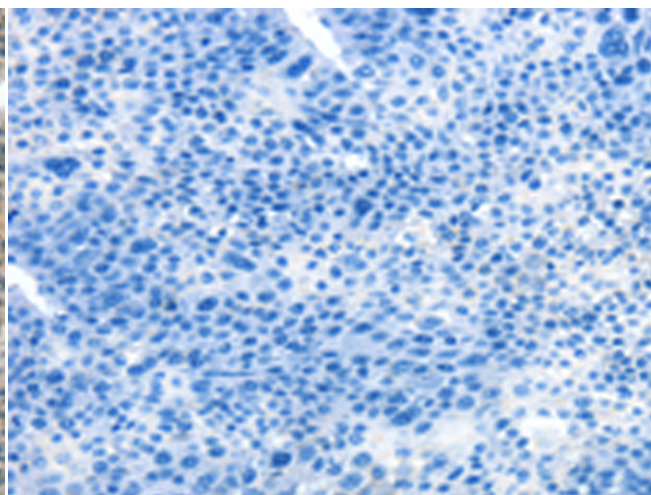
成分: PBS (without Mg²⁺ and Ca²⁺), pH 7.4, 150 mM NaCl, 0.05% Sodium Azide and 40% glycerol

研究领域: Immunology

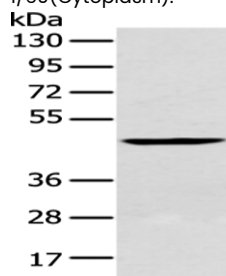
储存和运输: Store at -20°C. Avoid repeated freezing and thawing



Immunohistochemistry analysis of paraffin embedded Human liver cancer tissue using 220469(CRLF2 Antibody) at a dilution of 1/60(Cytoplasm).



In comparison with the IHC on the left, the same paraffin-embedded Human liver cancer tissue is first treated with the synthetic peptide and then with 220469(Anti-CRLF2 Antibody) at dilution 1/60.



Gel: 8%SDS-PAGE, Lysate: 40 µg;

Lane: 293T cell;

Primary antibody: 220469(CRLF2 Antibody) at dilution 1/200;

Secondary antibody: Goat anti rabbit IgG at 1/8000 dilution;

Exposure time: 1 minute