

CRKL RABBIT MAB

货号: N263281

产品全名: CrkL 兔单克隆抗体

基因符号 Crk L; Crk like protein; Crkl; Crkol

UNIPROT ID: P46109

背景: May mediate the transduction of intracellular signals.

抗原: A synthetic peptide of human CrkL

经过测试的应用: WB,ICC/IF

推荐稀释比: WB: 1/500-1/1000 IF: 1/50-1/200

种属反应性: Rabbit

克隆性: Rabbit Monoclonal

克隆编号: R02-3D8

分子量: Calculated MW: 34 kDa; Observed MW: 39 kDa

亚型: IgG

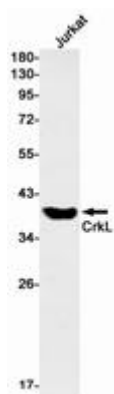
纯化: Affinity Purified

种属反应性: Human

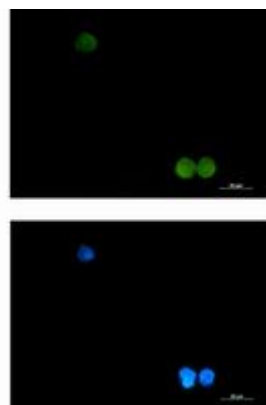
成分: PBS (without Mg²⁺ and Ca²⁺), pH 7.3 containing 50% glycerol, 0.5% BSA and 0.02% sodium azide

研究领域: Neuroscience

储存和运输: Store at -20°C. Avoid repeated freezing and thawing



Western blot analysis of CrkL in Jurkat lysates using CrkL antibody.



Immunocytochemistry analysis of CrkL (green) in K562 using CrkL antibody, and DAPI (blue).