

CRELD2 RABBIT PAB

货号: S217306

产品全名: CRELD2 兔多抗

基因符号

UNIPROT ID: Q6UXH1 (Gene Accession - BC002894)

背景: CRELD2 (cysteine-rich with EGF-like domains 2) is a 353 amino acid protein that is ubiquitously expressed and contains two FU domains and two EGF-like domains. Localized to the endoplasmic reticulum and secreted into the cell, CRELD2 interacts with AChR α 4, possibly regulating its transport. Human CRELD2 shares 69% amino acid identity with its mouse counterpart, suggesting a conserved role between species. Multiple isoforms of CRELD2 exist due to alternative splicing events. The gene encoding CRELD2 maps to human chromosome 22, which houses over 500 genes and is the second smallest human chromosome.

抗原: Fusion protein of human CRELD2

经过测试的应用: ELISA, WB, IHC

推荐稀释比: IHC: 50-200;WB: 500-2000;ELISA: 2000-5000

种属反应性: Rabbit

克隆性: Rabbit Polyclonal

亚型: Immunogen-specific rabbit IgG

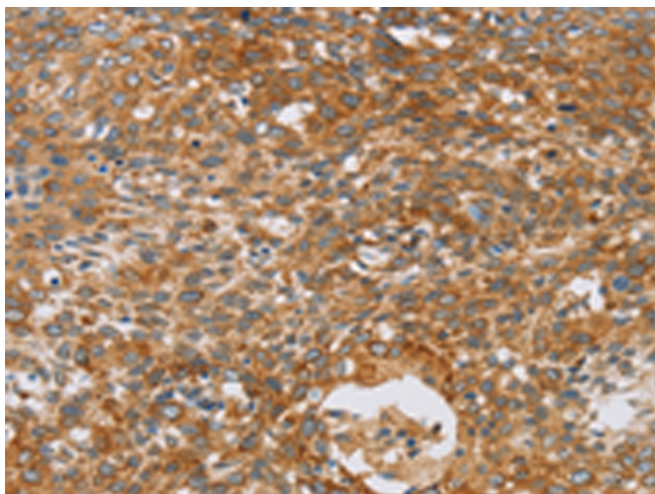
纯化: Antigen affinity purification

种属反应性: Human

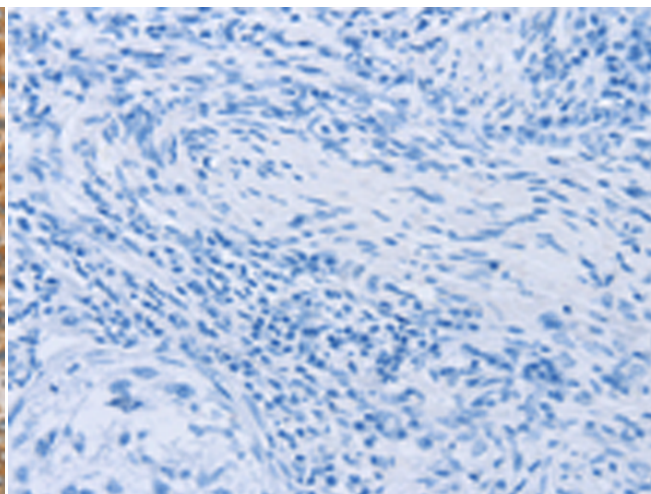
成分: PBS (without Mg²⁺ and Ca²⁺), pH 7.4, 150 mM NaCl, 0.05% Sodium Azide and 40% glycerol

研究领域: Neuroscience

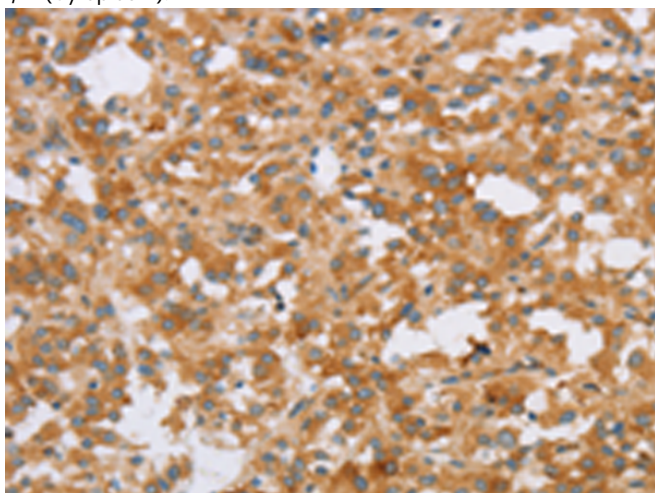
储存和运输: Store at -20°C. Avoid repeated freezing and thawing



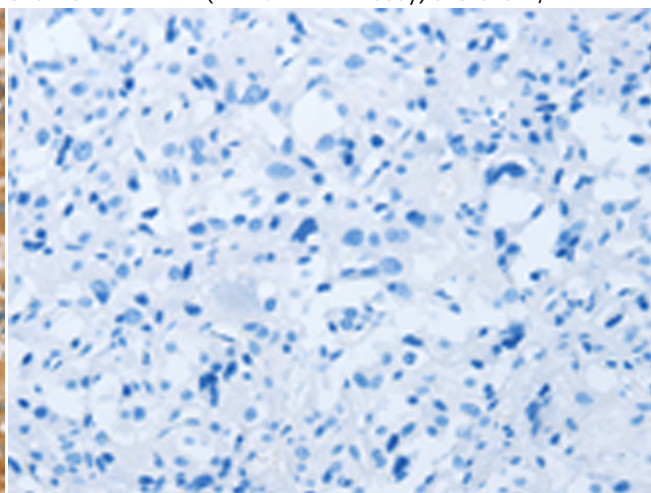
Immunohistochemistry analysis of paraffin embedded Human cervical cancer tissue using 217306(CRELD2 Antibody) at a dilution of 1/40(Cytoplasm).



In comparison with the IHC on the left, the same paraffin-embedded Human cervical cancer tissue is first treated with the fusion protein and then with 217306(Anti-CRELD2 Antibody) at dilution 1/40.



The image on the left is immunohistochemistry of paraffin-embedded Human thyroid cancer tissue using 217306(Anti-CRELD2 Antibody) at a dilution of 1/40.



In comparison with the IHC on the left, the same paraffin-embedded Human thyroid cancer tissue is first treated with fusion protein and then with D222148(Anti-CRELD2 Antibody) at dilution 1/40.



Gel: 8%SDS-PAGE, Lysate: 40 µg;
Lane: Human fetal liver tissue;
Primary antibody: 217306(CRELD2 Antibody) at dilution 1/421;
Secondary antibody: Goat anti rabbit IgG at 1/8000 dilution;
Exposure time: 2 minutes

