

## CREB RABBIT MAB

货号: N262066

产品全名: CREB 兔单克隆抗体

基因符号 CREB1; Cyclic AMP-responsive element-binding protein 1;  
CREB-1; cAMP-responsive element-binding protein 1

**UNIPROT ID:** P16220

背景: This gene encodes a transcription factor that is a member of the leucine zipper family of DNA binding proteins. This protein binds as a homodimer to the cAMP-responsive element, an octameric palindrome.

抗原: A synthetic peptide of human CREB

经过测试的应用: WB,IHC-P,IP

推荐稀释比: WB: 1/500-1/1000 IHC: 1/50-1/100 IP: 1/20

种属反应性: Rabbit

克隆性: Rabbit Monoclonal

克隆编号: R08-4H9

分子量: Calculated MW: 35 kDa; Observed MW: 43 kDa

亚型: IgG

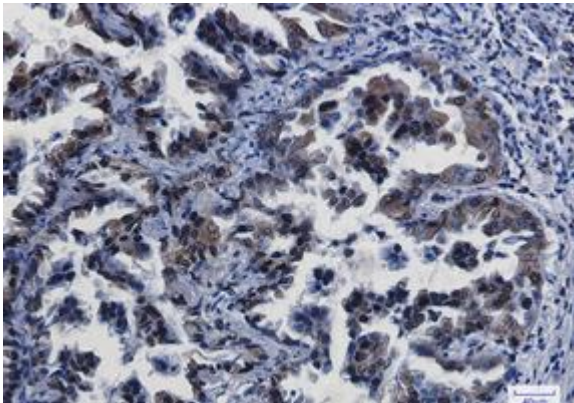
纯化: Affinity Purified

种属反应性: Human, Mouse and Rat

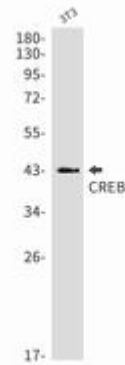
成分: PBS (without Mg<sup>2+</sup> and Ca<sup>2+</sup>), pH 7.3 containing 50% glycerol, 0.5% BSA and 0.02% sodium azide

研究领域: Epigenetics and Nuclear Signaling

储存和运输: Store at -20°C. Avoid repeated freezing and thawing



Immunohistochemistry analysis of paraffin-embedded Human lung cancer using CREB antibody. High- pressure and temperature Sodium Citrate pH 6.0 was used for antigen retrieval.



Western blot analysis of CREB in Sodium 3T3 lysates using CREB antibody.



Western blot analysis of CREB in HeLa lysates using CREB antibody.