

CREATINE KINASE B TYPE RABBIT MAB

货号: N262064

产品全名: Creatine Kinase B type 兔单克隆抗体

基因符号 BCK; Ckb; CKBB; HEL 211; HEL S 29

UNIPROT ID: P12277

背景: Reversibly catalyzes the transfer of phosphate between ATP and various phosphogens (e.g. creatine phosphate). Creatine kinase isoenzymes play a central role in energy transduction in tissues with large, fluctuating energy demands, such as skeletal muscle, heart, brain and spermatozoa.

抗原: A synthetic peptide of human Creatine kinase B type

经过测试的应用: WB,IHC-P

推荐稀释比: WB: 1/500-1/1000 IHC: 1/50-1/100

种属反应性: Rabbit

克隆性: Rabbit Monoclonal

克隆编号: R03-4C1

分子量: Calculated MW: 43 kDa; Observed MW: 43 kDa

亚型: IgG

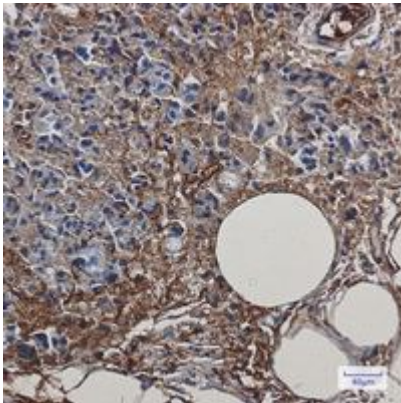
纯化: Affinity Purified

种属反应性: Human, Mouse and Rat

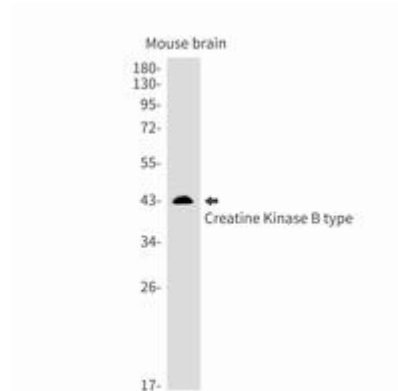
成分: PBS (without Mg²⁺ and Ca²⁺), pH 7.3 containing 50% glycerol, 0.5% BSA and 0.02% sodium azide

研究领域: Neuroscience

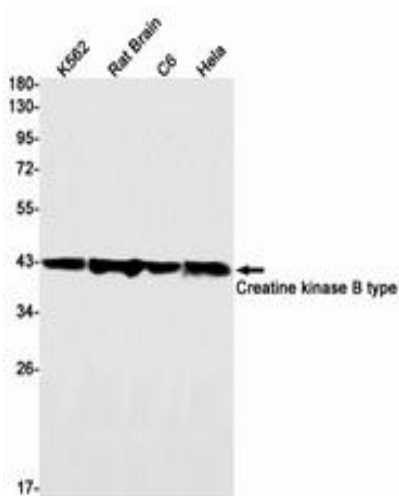
储存和运输: Store at -20°C. Avoid repeated freezing and thawing



Immunohistochemistry analysis of paraffin-embedded Human breast cancer using Creatine kinase B type antibody. High-pressure and temperature Sodium Citrate pH 6.0 was used for antigen retrieval.



Western blot analysis of Creatine Kinase B type in mouse brain lysates using Creatine Kinase B type antibody.



Western blot analysis of Creatine kinase B type in K562, rat Brain, C6, HeLa lysates using Creatine kinase B type antibody.