

CRCP RABBIT PAB

货号: S212272

产品全名: CRCP 兔多抗

基因符号 RCP; RCP9; RPC9; CGRPRCP; CGRP-RCP

UNIPROT ID: O75575 (Gene Accession - BC040107)

背景: This gene encodes a membrane protein that functions as part of a receptor complex for a small neuropeptide that increases intracellular cAMP levels. Alternate transcriptional splice variants, encoding different isoforms, have been characterized.

抗原: Fusion protein of human CRCP

经过测试的应用: ELISA, IHC

推荐稀释比: IHC: 50-200; ELISA: 5000-10000

种属反应性: Rabbit

克隆性: Rabbit Polyclonal

亚型: Immunogen-specific rabbit IgG

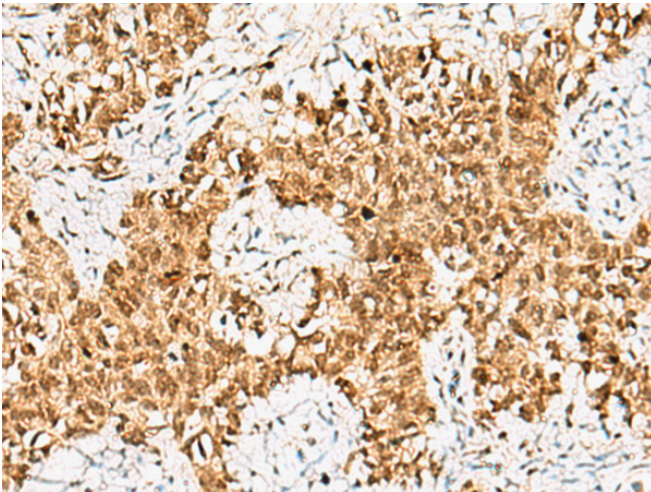
纯化: Antigen affinity purification

种属反应性: Human

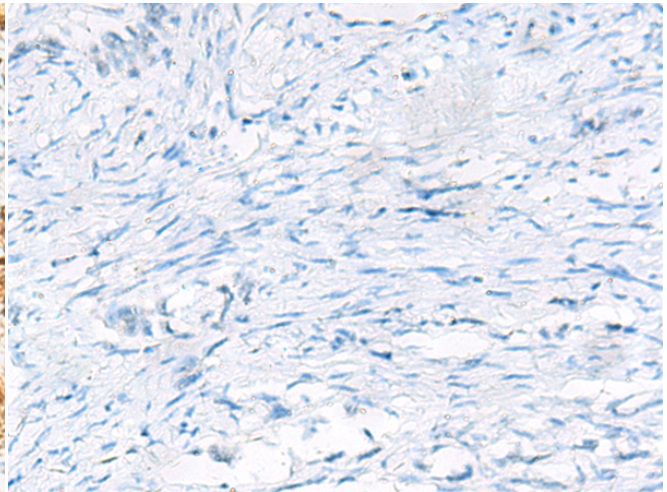
成分: PBS (without Mg²⁺ and Ca²⁺), pH 7.4, 150 mM NaCl, 0.05% Sodium Azide and 40% glycerol

研究领域: Signal Transduction, Neuroscience, Cardiovascular

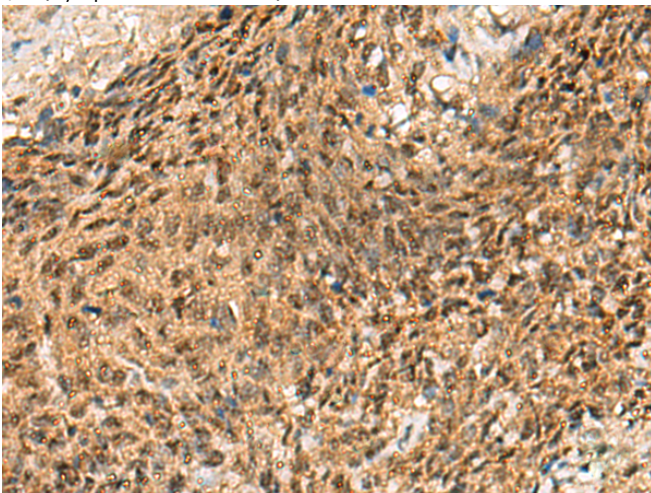
储存和运输: Store at -20°C. Avoid repeated freezing and thawing



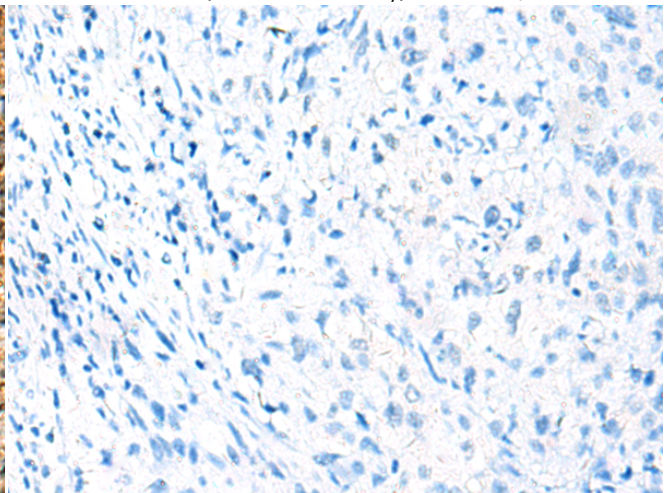
Immunohistochemistry analysis of paraffin embedded Human ovarian cancer tissue using 212272(CRCP Antibody) at a dilution of 1/65(Cytoplasm and Nucleus).



In comparison with the IHC on the left, the same paraffin-embedded Human ovarian cancer tissue is first treated with the fusion protein and then with 212272(Anti-CRCP Antibody) at dilution 1/65.



The image on the left is immunohistochemistry of paraffin-embedded Human cervical cancer tissue using 212272(Anti-CRCP Antibody) at a dilution of 1/65.



In comparison with the IHC on the left, the same paraffin-embedded Human cervical cancer tissue is first treated with fusion protein and then with D124678(Anti-CRCP Antibody) at dilution 1/65.



Product Description

Pioneering GTPase and Oncogene Product Development since 2010
