

## CRCP RABBIT MAB

货号: N263279

产品全名: CRCP 兔单克隆抗体

基因符号 C17; RCP; RCP9; RPC9; POLR3I; POLR3J; CGRPRCP; CGRP-RCP

**UNIPROT ID:** O75575

背景: DNA-dependent RNA polymerase catalyzes the transcription of DNA into RNA using the four ribonucleoside triphosphates as substrates.

抗原: A synthetic peptide of human CRCP

经过测试的应用: WB,IHC-F,IHC-P,ICC/IF,IP

推荐稀释比: WB: 1/500-1/1000 IHC: 1/50-1/100 IF: 1/50-1/200 IP: 1/20

种属反应性: Rabbit

克隆性: Rabbit Monoclonal

克隆编号: R03-6G8

分子量: Calculated MW: 17 kDa; Observed MW: 17 kDa

亚型: IgG

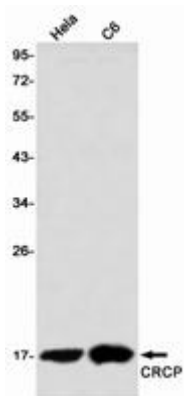
纯化: Affinity Purified

种属反应性: Human, Mouse and Rat

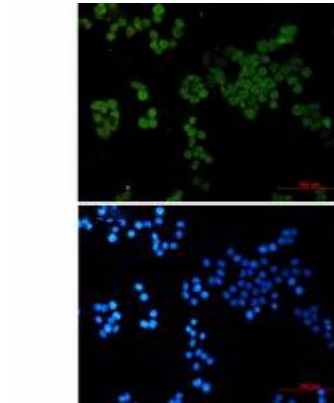
成分: PBS (without Mg<sup>2+</sup> and Ca<sup>2+</sup>), pH 7.3 containing 50% glycerol, 0.5% BSA and 0.02% sodium azide

研究领域: Neuroscience

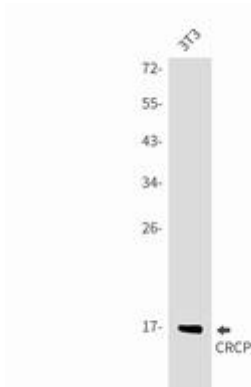
储存和运输: Store at -20°C. Avoid repeated freezing and thawing



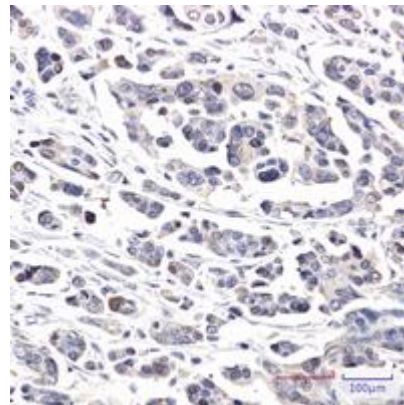
Western blot analysis of CRCP in HeLa, C6 lysates using CRCP antibody



Immunocytochemistry analysis of CRCP (green) in HeLa using CRCP antibody, and DAPI (blue).



Western blot analysis of CRCP in 3T3 lysates using CRCP antibody.



Immunohistochemistry analysis of paraffin-embedded Human Cholangiocarcinoma using CRCP antibody. High-pressure and temperature Sodium Citrate pH 6.0 was used for antigen retrieval.