

CPT1B RABBIT PAB

货号: S218552

产品全名: CPT1B 兔多抗

基因符号: CPT1; CPT1M; MCPT1; CPT1-M; CPT1-M; M-CPT1; MCCPT1

UNIPROT ID: Q92523 (Gene Accession - BC131570)

背景: The protein encoded by this gene, a member of the carnitine/choline acetyltransferase family, is the rate-controlling enzyme of the long-chain fatty acid beta-oxidation pathway in muscle mitochondria. This enzyme is required for the net transport of long-chain fatty acyl-CoAs from the cytoplasm into the mitochondria. Multiple transcript variants encoding different isoforms have been found for this gene, and read-through transcripts are expressed from the upstream locus that include exons from this gene.

抗原: Fusion protein of human CPT1B

经过测试的应用: ELISA, IHC

推荐稀释比: IHC: 25-100; ELISA: 5000-10000

种属反应性: Rabbit

克隆性: Rabbit Polyclonal

亚型: Immunogen-specific rabbit IgG

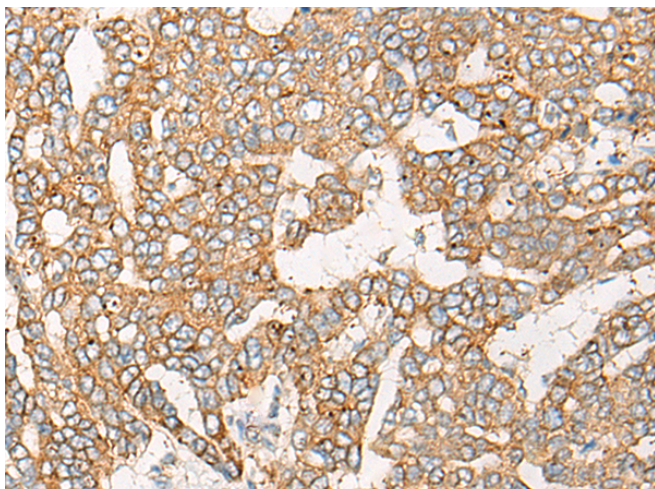
纯化: Antigen affinity purification

种属反应性: Human, Mouse, Rat

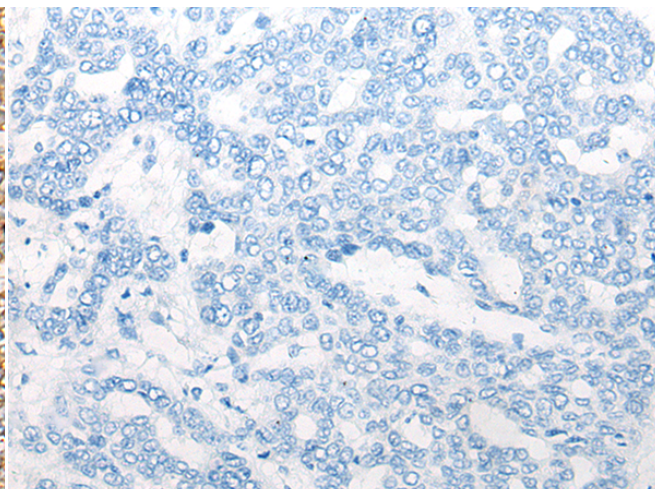
成分: PBS (without Mg²⁺ and Ca²⁺), pH 7.4, 150 mM NaCl, 0.05% Sodium Azide and 40% glycerol

研究领域: Signal Transduction, Cardiovascular, Cancer, Metabolism

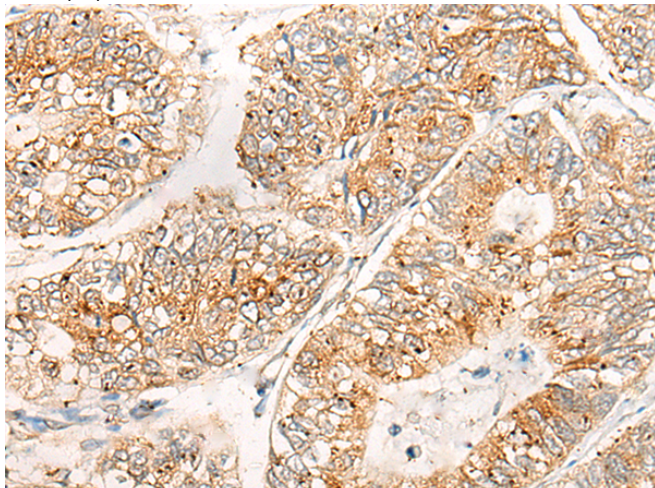
储存和运输: Store at -20°C. Avoid repeated freezing and thawing



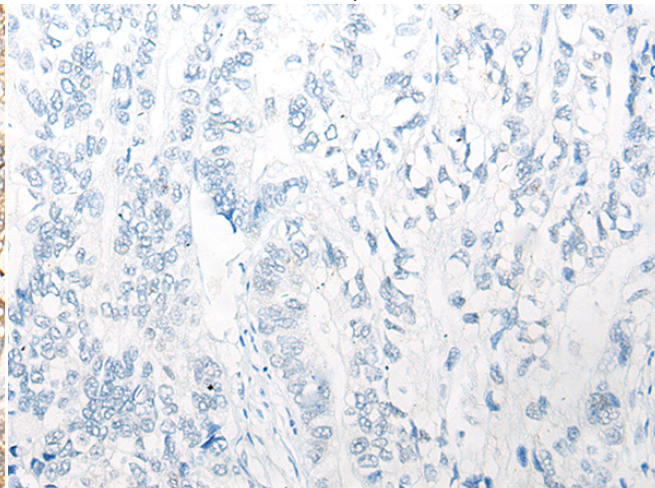
Immunohistochemistry analysis of paraffin embedded Human liver cancer tissue using 218552(CPT1B Antibody) at a dilution of 1/25(Cytoplasm).



In comparison with the IHC on the left, the same paraffin-embedded Human liver cancer tissue is first treated with the fusion protein and then with 218552(Anti-CPT1B Antibody) at dilution 1/25.



The image on the left is immunohistochemistry of paraffin-embedded Human gastric cancer tissue using 218552(Anti-CPT1B Antibody) at a dilution of 1/25.



In comparison with the IHC on the left, the same paraffin-embedded Human gastric cancer tissue is first treated with fusion protein and then with D224669(Anti-CPT1B Antibody) at dilution 1/25.



Product Description

Pioneering GTPase and Oncogene Product Development since 2010
