

## CPS1 RABBIT MAB

货号: N263278

产品全名: CPS1 兔单克隆抗体

基因符号 Cps1; CPSase 1; CPSase I; CPSASEI; MS738

**UNIPROT ID:** P31327

背景: Involved in the urea cycle of ureotelic animals where the enzyme plays an important role in removing excess ammonia from the cell.

抗原: A synthetic peptide of human CPS1

经过测试的应用: WB,IHC-P,IP

推荐稀释比: WB: 1/500-1/1000 IHC: 1/50-1/100 IP: 1/20

种属反应性: Rabbit

克隆性: Rabbit Monoclonal

克隆编号: R01-2A0

分子量: Calculated MW: 165 kDa; Observed MW: 160 kDa

亚型: IgG

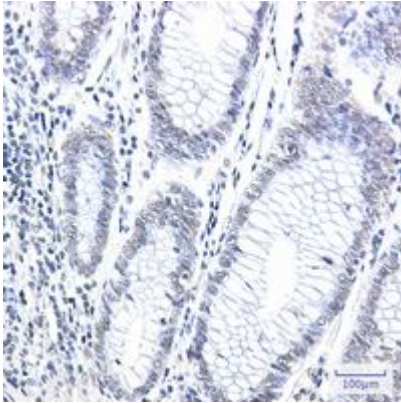
纯化: Affinity Purified

种属反应性: Human

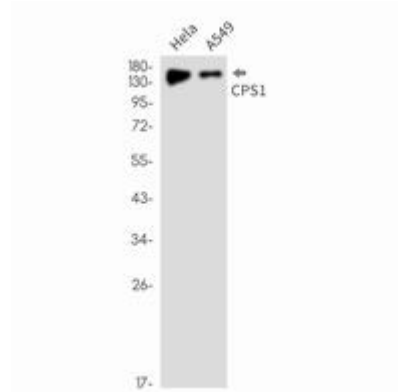
成分: PBS (without Mg<sup>2+</sup> and Ca<sup>2+</sup>), pH 7.3 containing 50% glycerol, 0.5% BSA and 0.02% sodium azide

研究领域: Tags & Cell Markers

储存和运输: Store at -20°C. Avoid repeated freezing and thawing



Immunohistochemistry analysis of paraffin-embedded Human colon cancer using CPS1 antibody. High-pressure and temperature Sodium Citrate pH 6.0 was used for antigen retrieval.



Western blot analysis of CPS1 in HeLa, A549 lysates using CPS1 antibody.