

CPLX3 RABBIT PAB

货号: S219217

产品全名: CPLX3 兔多抗

基因符号 CPXIII; CPX-III; Nbla11589

UNIPROT ID: Q8WVH0 (Gene Accession - BC018026)

背景: Positively regulates a late step in synaptic vesicle exocytosis.

抗原: Fusion protein of human CPLX3

经过测试的应用: ELISA, IHC

推荐稀释比: IHC: 50-200; ELISA: 5000-10000

种属反应性: Rabbit

克隆性: Rabbit Polyclonal

亚型: Immunogen-specific rabbit IgG

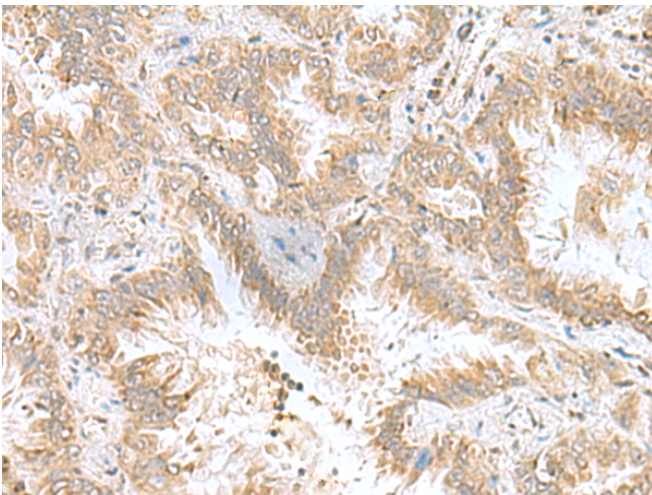
纯化: Antigen affinity purification

种属反应性: Human, Mouse

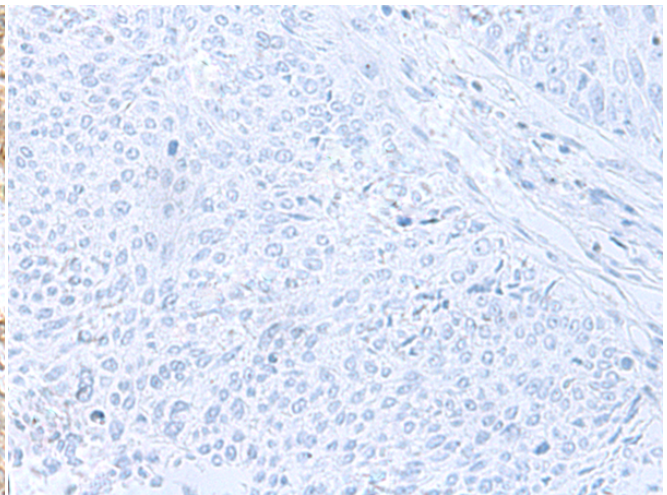
成分: PBS (without Mg²⁺ and Ca²⁺), pH 7.4, 150 mM NaCl, 0.05% Sodium Azide and 40% glycerol

研究领域: Neuroscience

储存和运输: Store at -20°C. Avoid repeated freezing and thawing



Immunohistochemistry analysis of paraffin embedded Human lung cancer tissue using 219217(CPLX3 Antibody) at a dilution of 1/55(Cytoplasm).



In comparison with the IHC on the left, the same paraffin-embedded Human lung cancer tissue is first treated with the fusion protein and then with 219217(Anti-CPLX3 Antibody) at dilution 1/55.