

COX6B2 RABBIT PAB

货号: S210242

产品全名: COX6B2 兔多抗

基因符号 CT59; COXVIB2

UNIPROT ID: Q6YFQ2 (Gene Accession - BC064548)

背景: The cytochrome c oxidase (COX) family of proteins function as the final electron donor in the respiratory chain to drive a proton gradient across the inner mitochondrial membrane, ultimately resulting in the production of water. The mammalian COX apoenzyme is a dimer, with each monomer consisting of 13 subunits, some of which are mitochondrial and some of which are nuclear. Localized to the intermembrane space, COX6b2 (Cytochrome c oxidase subunit 6B2), also known as Cytochrome c oxidase subunit VIb isoform 2 and Cancer/testis antigen 59, is a 88 amino acid mitochondrial protein that is responsible for joining the two COX monomers to form the COX dimer. COX6b2 is specifically expressed in testis and is found to be upregulated in certain cancer cell lines.

抗原: Fusion protein of human COX6B2

经过测试的应用: ELISA, WB, IHC

推荐稀释比: IHC: 100-200;WB: 500-2000;ELISA: 5000-10000

种属反应性: Rabbit

克隆性: Rabbit Polyclonal

亚型: Immunogen-specific rabbit IgG

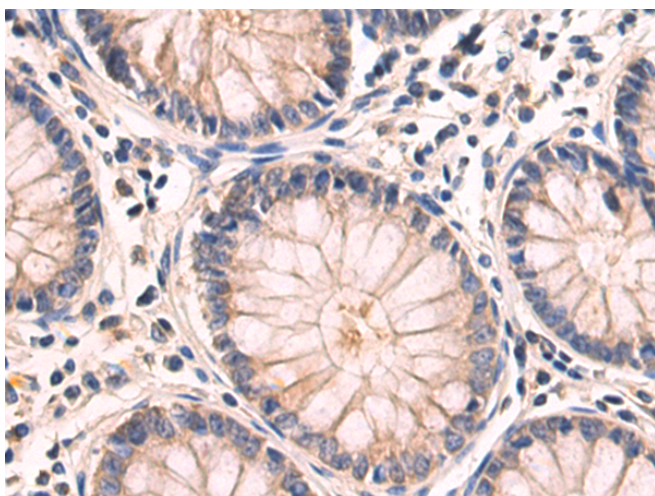
纯化: Antigen affinity purification

种属反应性: Human, Mouse

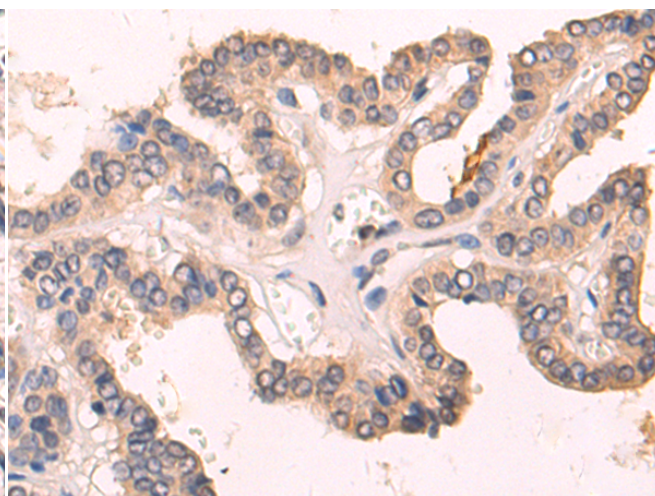
成分: PBS (without Mg²⁺ and Ca²⁺), pH 7.4, 150 mM NaCl, 0.05% Sodium Azide and 40% glycerol

研究领域: Cancer

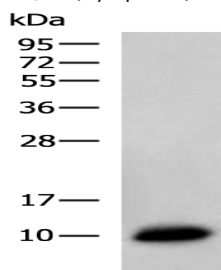
储存和运输: Store at -20°C. Avoid repeated freezing and thawing



Immunohistochemistry analysis of paraffin-embedded Human colorectal cancer tissue using 210242(COX6B2 Antibody) at a dilution of 1/135(Cytoplasm).



Immunohistochemistry analysis of paraffin-embedded Human thyroid cancer tissue using 210242(Anti-COX6B2 Antibody) at a dilution of 1/135.



Gel: 12%SDS-PAGE, Lysate: 40 µg;

Lane: Mouse testis tissue lysate;

Primary antibody: 210242(COX6B2 Antibody) at dilution 1/800;

Secondary antibody: HRP-conjugated Goat anti rabbit IgG at 1/5000 dilution;

Exposure time: 30 seconds



Product Description

Pioneering GTPase and Oncogene Product Development since 2010
