

## COX18 RABBIT PAB

货号: S219713

产品全名: COX18 兔多抗

基因符号: COX18HS

**UNIPROT ID:** Q8N8Q8 (Gene Accession - NP\_776188 )

**背景:** COX18 encodes a cytochrome c oxidase (COX)-assembly protein. The *S. cerevisiae* Cox18 protein catalyzes the insertion of the Cox2 (MTCO2; MIM 516040) C-terminal tail into the mitochondrial inner membrane, an intermediate step in the assembly of complex IV of the mitochondrial respiratory chain.

**抗原:** Synthetic peptide of human COX18

**经过测试的应用:** ELISA, IHC

**推荐稀释比:** IHC: 25-100; ELISA: 1000-2000

**种属反应性:** Rabbit

**克隆性:** Rabbit Polyclonal

**亚型:** Immunogen-specific rabbit IgG

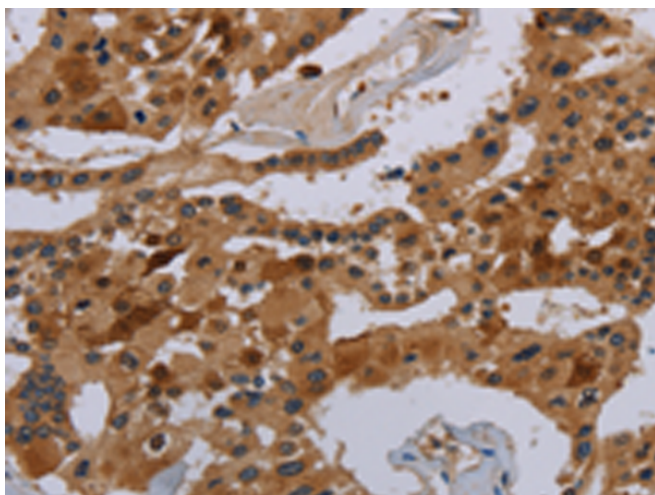
**纯化:** Antigen affinity purification

**种属反应性:** Human, Mouse

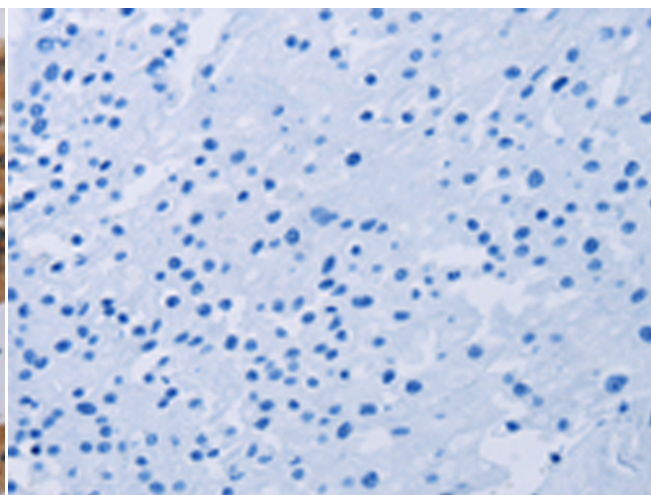
**成分:** PBS (without Mg<sup>2+</sup> and Ca<sup>2+</sup>), pH 7.4, 150 mM NaCl, 0.05% Sodium Azide and 40% glycerol

**研究领域:** Metabolism

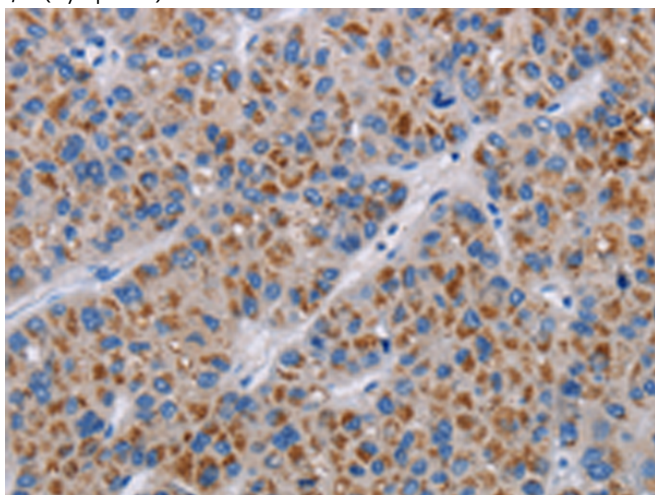
**储存和运输:** Store at -20°C. Avoid repeated freezing and thawing



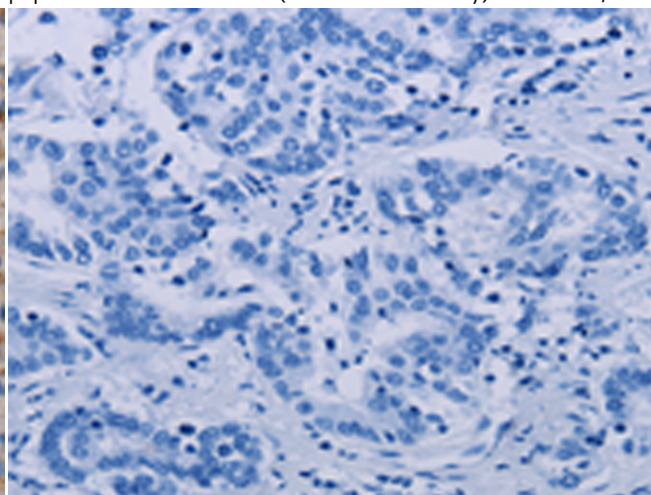
Immunohistochemistry analysis of paraffin embedded Human prostate cancer tissue using 219713(COX18 Antibody) at a dilution of 1/20(Cytoplasm).



In comparison with the IHC on the left, the same paraffin-embedded Human prostate cancer tissue is first treated with the synthetic peptide and then with 219713(Anti-COX18 Antibody) at dilution 1/20.



The image on the left is immunohistochemistry of paraffin-embedded Human liver cancer tissue using 219713(Anti-COX18 Antibody) at a dilution of 1/20.



In comparison with the IHC on the left, the same paraffin-embedded Human liver cancer tissue is first treated with synthetic peptide and then with D260198(Anti-COX18 Antibody) at dilution 1/20.



# Product Description

Pioneering GTPase and Oncogene Product Development since 2010

---