

## CORTACTIN RABBIT MAB

货号: N262055

产品全名: Cortactin 兔单克隆抗体

基因符号 CTTN; EMS1; Src substrate cortactin; Amplexin; Oncogene EMS1

**UNIPROT ID:** Q14247

背景: Cortactin a cytoskeletal protein that that is involved in coordinating actin reorganization during cell movement. Localizes at the leading edge of lamellipodia during cell migration. Its amino-terminal acidic domain associates with the Arp2/3 and WASP complex at F-actin branches.

抗原: A synthetic peptide of human Cortactin

经过测试的应用: WB,IHC-F,IHC-P,ICC/IF,IP

推荐稀释比: WB: 1/500-1/1000 IHC: 1/50-1/100 IF: 1/50-1/200 IP: 1/20

种属反应性: Rabbit

克隆性: Rabbit Monoclonal

克隆编号: R07-2C5

分子量: Calculated MW: 62 kDa; Observed MW: 80-85 kDa

亚型: IgG

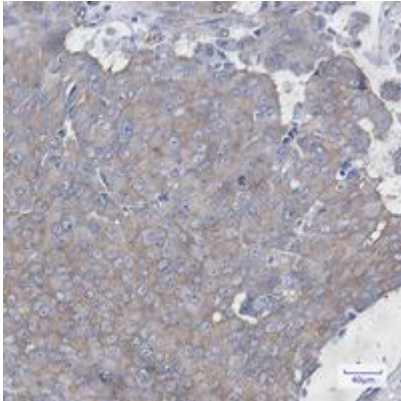
纯化: Affinity Purified

种属反应性: Human, Mouse and Rat

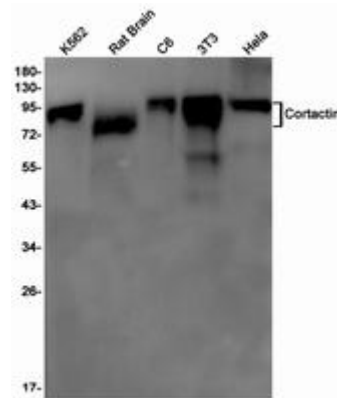
成分: PBS (without Mg<sup>2+</sup> and Ca<sup>2+</sup>), pH 7.3 containing 50% glycerol, 0.5% BSA and 0.02% sodium azide

研究领域: Signal Transduction

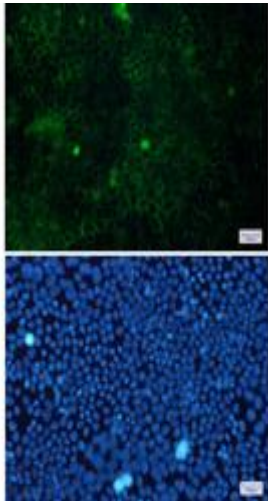
储存和运输: Store at -20°C. Avoid repeated freezing and thawing



Immunohistochemistry analysis of paraffin-embedded Human breast cancer using Cortactin antibody. High-pressure and temperature Sodium Citrate pH 6.0 was used for antigen retrieval.



Western blot analysis of Cortactin in K562, rat Brain, C6, 3T3, HeLa lysates using Cortactin antibody.



Immunocytochemistry analysis of Cortactin (green) in HeLa using Cortactin antibody, and DAPI (blue)