

CORO2B RABBIT PAB

货号: S219481

产品全名: CORO2B 兔多抗

基因符号: CLIPINC

UNIPROT ID: Q9UQ03 (Gene Accession - BC026335)

背景: May play a role in the reorganization of neuronal actin structure.

抗原: Fusion protein of human CORO2B

经过测试的应用: ELISA, IHC

推荐稀释比: IHC: 150-300; ELISA: 5000-10000

种属反应性: Rabbit

克隆性: Rabbit Polyclonal

亚型: Immunogen-specific rabbit IgG

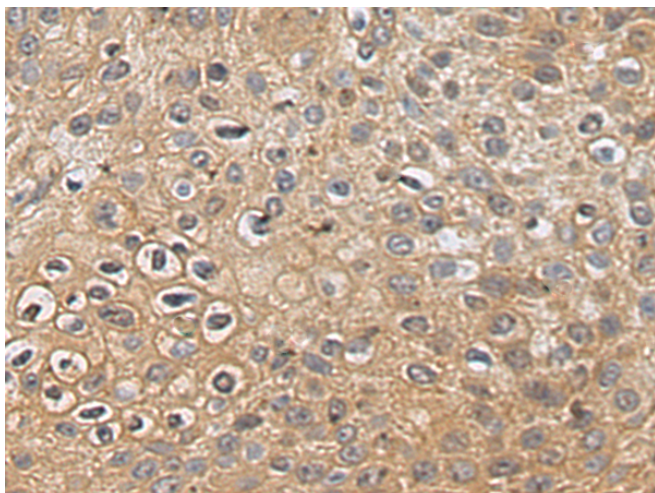
纯化: Antigen affinity purification

种属反应性: Human, Mouse

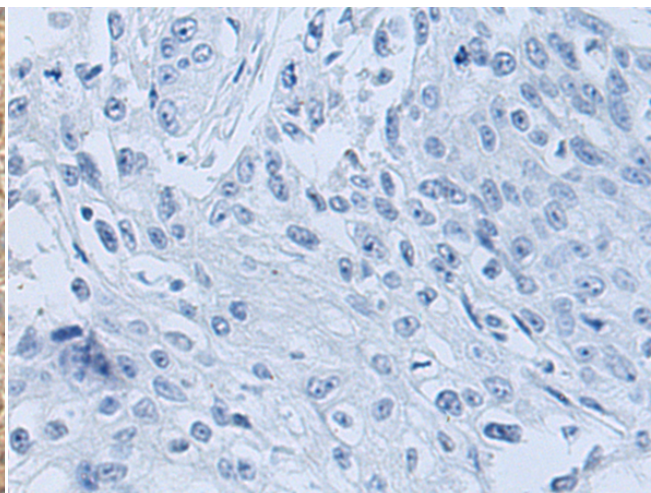
成分: PBS (without Mg²⁺ and Ca²⁺), pH 7.4, 150 mM NaCl, 0.05% Sodium Azide and 40% glycerol

研究领域: Signal Transduction, Neuroscience

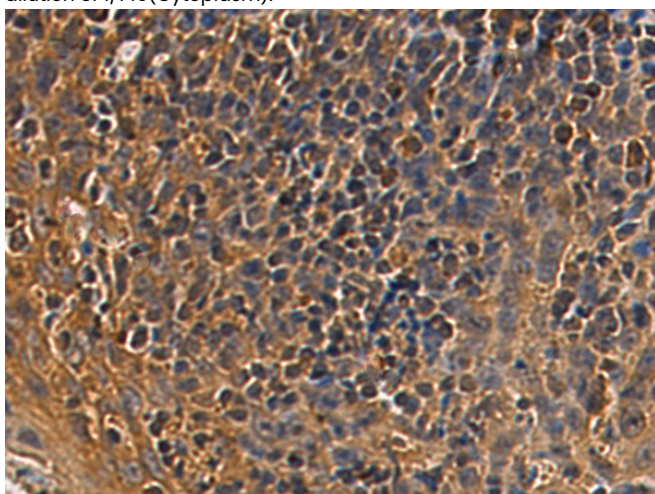
储存和运输: Store at -20°C. Avoid repeated freezing and thawing



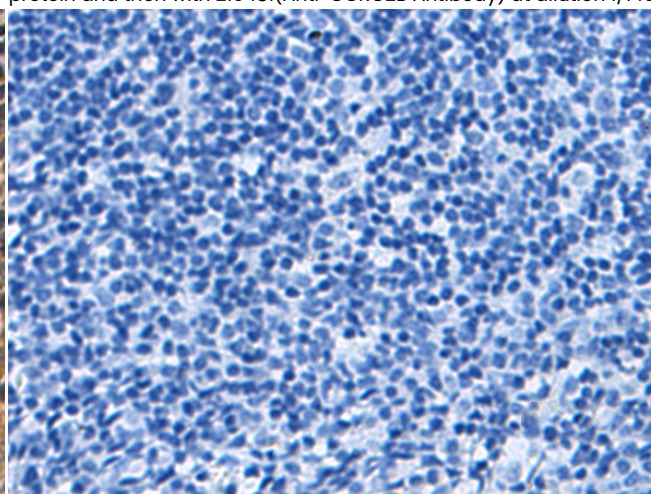
Immunohistochemistry analysis of paraffin embedded Human esophagus cancer tissue using 219481(CORO2B Antibody) at a dilution of 1/140(Cytoplasm).



In comparison with the IHC on the left, the same paraffin-embedded Human esophagus cancer tissue is first treated with the fusion protein and then with 219481(Anti-CORO2B Antibody) at dilution 1/140.



The image on the left is immunohistochemistry of paraffin-embedded Human tonsil tissue using 219481(Anti-CORO2B Antibody) at a dilution of 1/140.



In comparison with the IHC on the left, the same paraffin-embedded Human tonsil tissue is first treated with fusion protein and then with D22731(Anti-CORO2B Antibody) at dilution 1/140.



Product Description

Pioneering GTPase and Oncogene Product Development since 2010
