

COPS8 RABBIT MAB

货号: N261600

产品全名: COPS8 兔单克隆抗体

基因符号 COP9 signalosome subunit 8; COP9; CSN8; SGN8

UNIPROT ID: Q99627

背景: Component of the COP9 signalosome complex (CSN), a complex involved in various cellular and developmental processes.

抗原: A synthetic peptide of human COPS8

经过测试的应用: WB,IHC-F,IHC-P,ICC/IF,IP

推荐稀释比: WB: 1/500-1/1000 IHC: 1/50-1/100 IF: 1/50-1/200 IP: 1/20

种属反应性: Rabbit

克隆性: Rabbit Monoclonal

克隆编号: R05-6D7

分子量: Calculated MW: 23 kDa; Observed MW: 23 kDa

亚型: IgG

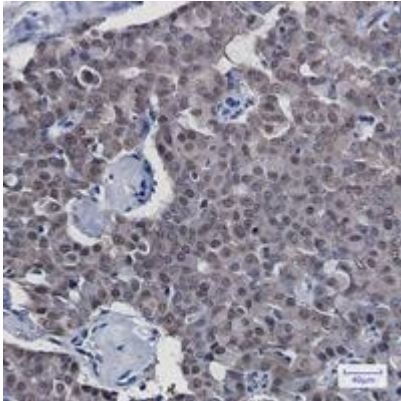
纯化: Affinity Purified

种属反应性: Human, Mouse and Rat

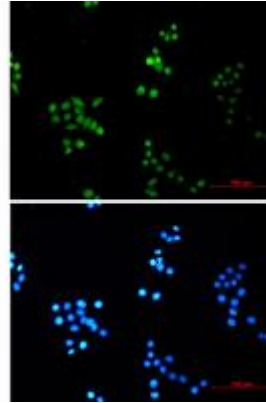
成分: PBS (without Mg²⁺ and Ca²⁺), pH 7.3 containing 50% glycerol, 0.5% BSA and 0.02% sodium azide

研究领域: Immunology

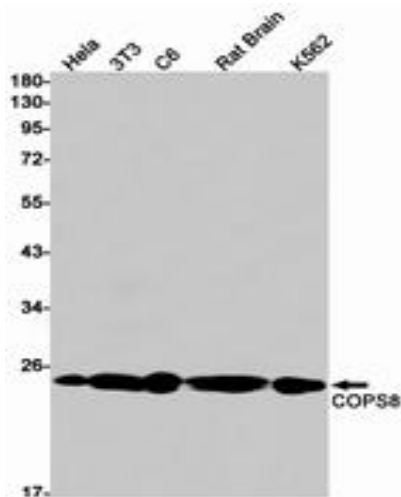
储存和运输: Store at -20°C. Avoid repeated freezing and thawing



Immunohistochemistry analysis of paraffin-embedded Human breast cancer tissue using COPS8 antibody. High-pressure and temperature Sodium Citrate pH 6.0 was used for antigen retrieval.



Immunocytochemistry analysis of COPS8 (green) in Hela using COPS8 antibody, and DAPI (blue).



Western blot analysis of COPS8 in Hela, 3T3, C6, rat Brain, K562 lysates using COPS8 antibody.