

## CONNEXIN 43 RABBIT PAB

货号: N225352

产品全名: Connexin 43 兔多抗

基因符号 Connexin 43; Connexin-43; Cx 43; Cx43; CXA1\_HUMAN; DFNB38; Gap junction 43 kDa heart protein; Gap junction alpha-1 protein; Gap junction protein alpha 1 43kDa (connexin 43); Gap junction protein alpha 1 43kDa; Gap junction protein alpha like; GJA 1; Gjal; GJAL; ODD; ODDD; ODOD; SDTY3.

**UNIPROT ID:** P17302

背景: Gap junction protein that acts as a regulator of bladder capacity.

抗原: The antiserum was produced against synthesized peptide derived from human Connexin 43. AA range:333-382

经过测试的应用: WB,IHC-F,IHC-P,ICC/IF,ELISA

推荐稀释比: WB: 1/500-1/1000 IHC: 1/50-1/100 IF: 1/50-1/200 ELISA: 1/10000

种属反应性: Rabbit

克隆性: Rabbit Polyclonal

分子量: Calculated MW: 43 kDa; Observed MW: 43 kDa

亚型: IgG

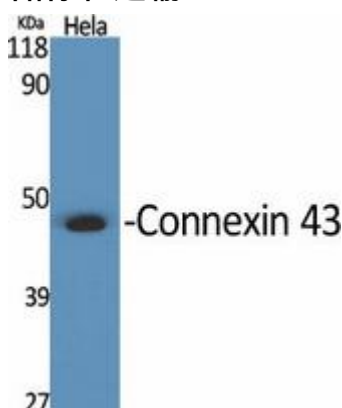
纯化: Affinity Purified

种属反应性: Human, Mouse and Rat

成分: PBS (without Mg<sup>2+</sup> and Ca<sup>2+</sup>), pH 7.3 containing 50% glycerol, 0.5% BSA and 0.02% sodium azide

研究领域: Signal Transduction

储存和运输: Store at -20°C. Avoid repeated freezing and thawing



Western blot analysis of Connexin 43 in various lysates using Connexin 43 antibody.



# Product Description

Pioneering GTPase and Oncogene Product Development since 2010

---