

## COLLAGEN IV ALPHA 1 RABBIT PAB

货号: N225208

产品全名: Collagen IV alpha 1 兔多抗

基因符号 Collagen alpha-1(IV) chain [Cleaved into: Arresten]

**UNIPROT ID:** P02462

背景: Type IV collagen is the major structural component of glomerular basement membranes (GBM), forming a 'chicken-wire' meshwork together with laminins, proteoglycans and entactin/nidogen.

抗原: Synthesized peptide derived from Collagen IV . at AA range: 1428-1443

经过测试的应用: WB,ELISA

推荐稀释比: WB: 1/500-1/1000 ELISA: 1/10000

种属反应性: Rabbit

克隆性: Rabbit Polyclonal

分子量: Calculated MW: 161 kDa; Observed MW: 130 kDa

亚型: IgG

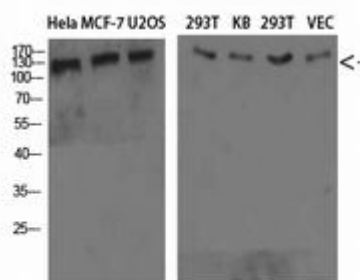
纯化: Affinity Purified

种属反应性: Human, Mouse and Rat

成分: PBS (without Mg<sup>2+</sup> and Ca<sup>2+</sup>), pH 7.3 containing 50% glycerol, 0.5% BSA and 0.02% sodium azide

研究领域: Signal Transduction

储存和运输: Store at -20°C. Avoid repeated freezing and thawing



Western blot analysis of Collagen IV alpha 1 in HeLa MCF-7 U2OS 293T KB 293T VEC lysates using Collagen IV alpha 1 antibody.