

COLEC12 RABBIT PAB

货号: S221199

产品全名: COLEC12 兔多抗

基因符号: CLP1; NSR2; SRCL; SCARA4

UNIPROT ID: Q5KU26 (Gene Accession - NP_569057)

背景: This gene encodes a member of the C-lectin family, proteins that possess collagen-like sequences and carbohydrate recognition domains. This protein is a scavenger receptor that displays several functions associated with host defense. It can bind to carbohydrate antigens on microorganisms, facilitating their recognition and removal. It also mediates the recognition, internalization, and degradation of oxidatively modified low density lipoprotein by vascular endothelial cells.

抗原: Synthetic peptide of human COLEC12

经过测试的应用: ELISA, WB, IHC

推荐稀释比: IHC: 50-200; WB: 500-2000; ELISA: 5000-10000

种属反应性: Rabbit

克隆性: Rabbit Polyclonal

亚型: Immunogen-specific rabbit IgG

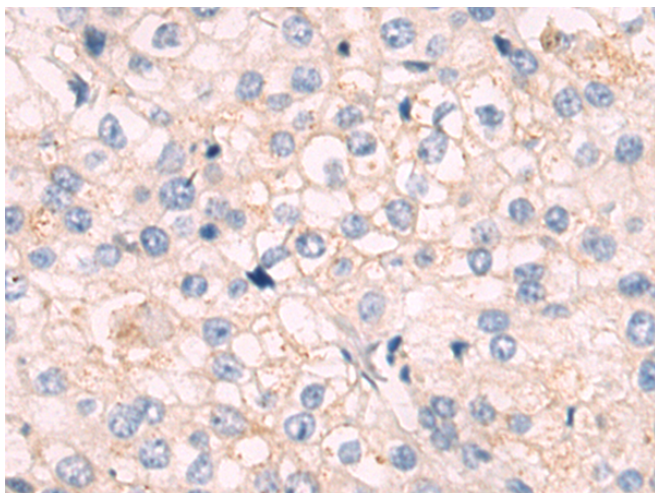
纯化: Antigen affinity purification

种属反应性: Human, Mouse, Rat

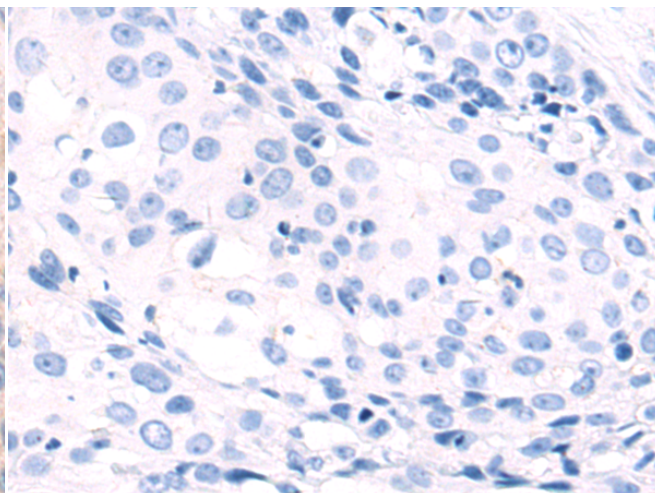
成分: PBS (without Mg²⁺ and Ca²⁺), pH 7.4, 150 mM NaCl, 0.05% Sodium Azide and 40% glycerol

研究领域: Neuroscience, Cardiovascular, Immunology

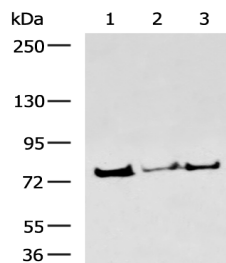
储存和运输: Store at -20°C. Avoid repeated freezing and thawing



Immunohistochemistry analysis of paraffin embedded Human cervical cancer tissue using 221199 (COLEC12 Antibody) at a dilution of 1/50 (Cytoplasm and Cell membrane).



In comparison with the IHC on the left, the same paraffin-embedded Human cervical cancer tissue is first treated with the synthetic peptide and then with 221199 (Anti-COLEC12 Antibody) at dilution 1/50.



Gel: 6% SDS-PAGE, Lysate: 40 µg;

Lane 1-3: HUVEC, K562, HepG2 cell lysates;

Primary antibody: 221199 (COLEC12 Antibody) at dilution 1/900;

Secondary antibody: HRP-conjugated Goat anti rabbit IgG at 1/5000 dilution;

Exposure time: 5 minutes