

COL4A1 RABBIT PAB

货号: S219715

产品全名: COL4A1 兔多抗

基因符号 ICH; HANAC; POREN1; arresten

UNIPROT ID: P02462 (Gene Accession - NP_001836.2)

背景: This gene encodes the major type IV alpha collagen chain of basement membranes. Like the other members of the type IV collagen gene family, this gene is organized in a head-to-head conformation with another type IV collagen gene so that each gene pair shares a common promoter.

抗原: Synthetic peptide of human COL4A1

经过测试的应用: ELISA, IHC

推荐稀释比: IHC: 25-100; ELISA: 1000-5000

种属反应性: Rabbit

克隆性: Rabbit Polyclonal

亚型: Immunogen-specific rabbit IgG

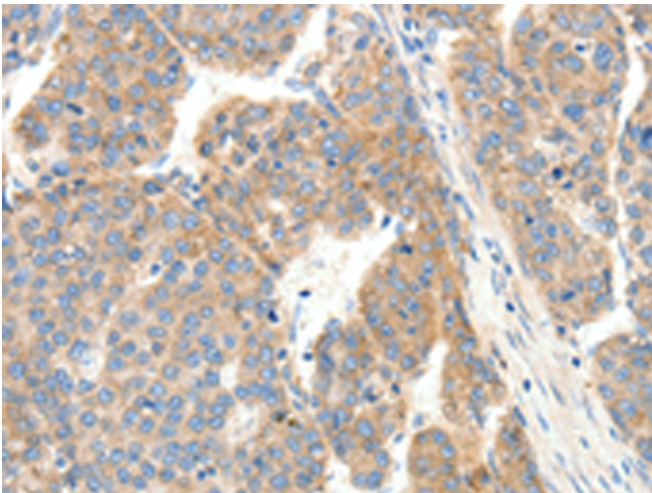
纯化: Antigen affinity purification

种属反应性: Human, Mouse

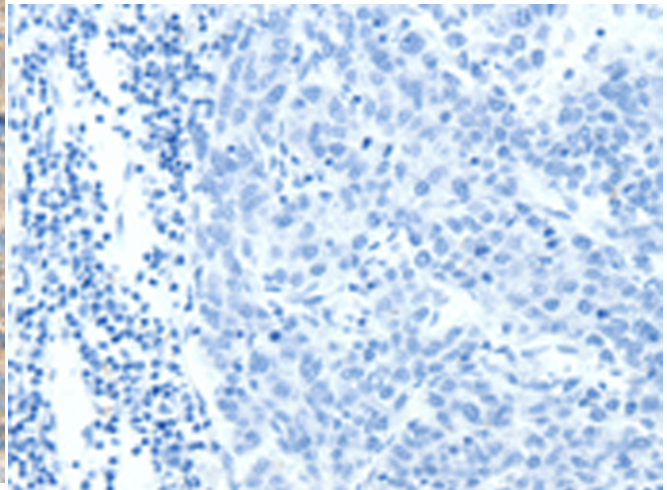
成分: PBS (without Mg²⁺ and Ca²⁺), pH 7.4, 150 mM NaCl, 0.05% Sodium Azide and 40% glycerol

研究领域: Signal Transduction, Stem Cells

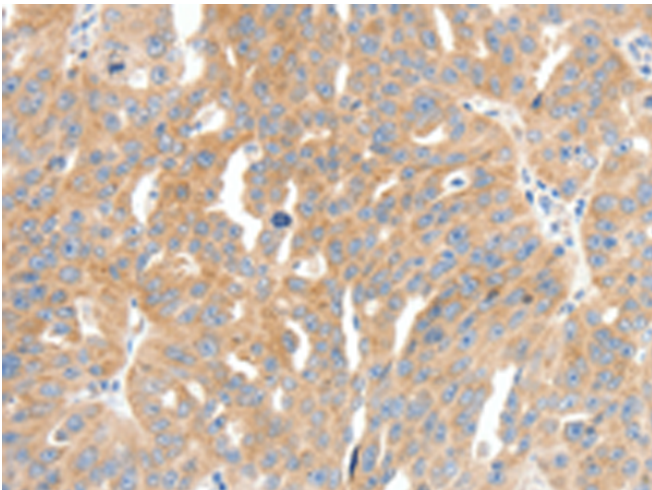
储存和运输: Store at -20°C. Avoid repeated freezing and thawing



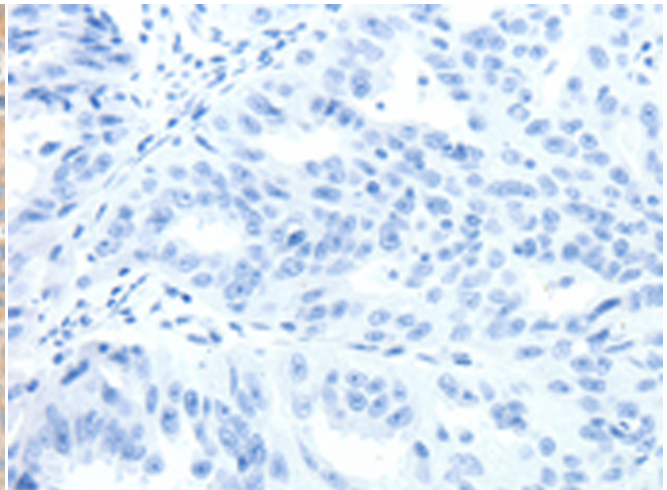
Immunohistochemistry analysis of paraffin embedded Human ovarian cancer tissue using 219715 (COL4A1 Antibody) at a dilution of 1/30 (Cytoplasm, Basement membrane, ExtraCellular space, ExtraCellular matrix).



In comparison with the IHC on the left, the same paraffin-embedded Human ovarian cancer tissue is first treated with the synthetic peptide and then with 219715 (Anti-COL4A1 Antibody) at dilution 1/30.



The image on the left is immunohistochemistry of paraffin-embedded Human breast cancer tissue using 219715 (Anti-COL4A1 Antibody) at a dilution of 1/30.



In comparison with the IHC on the left, the same paraffin-embedded Human breast cancer tissue is first treated with synthetic peptide and then with D260202 (Anti-COL4A1 Antibody) at dilution 1/30.



Product Description

Pioneering GTPase and Oncogene Product Development since 2010
