

## COL3A1 RABBIT PAB

货号: S216438

产品全名: COL3A1 兔多抗

基因符号: EDS4A

**UNIPROT ID:** P02461 (Gene Accession - BC028178 )

**背景:** This gene encodes the pro- $\alpha$ 1 chains of type III collagen, a fibrillar collagen that is found in extensible connective tissues such as skin, lung, uterus, intestine and the vascular system, frequently in association with type I collagen. Mutations in this gene are associated with Ehlers-Danlos syndrome types IV, and with aortic and arterial aneurysms. Two transcripts, resulting from the use of alternate polyadenylation signals, have been identified for this gene.

**抗原:** Fusion protein of human COL3A1

**经过测试的应用:** ELISA, IHC

**推荐稀释比:** IHC: 50-200; ELISA: 1000-5000

**种属反应性:** Rabbit

**克隆性:** Rabbit Polyclonal

**亚型:** Immunogen-specific rabbit IgG

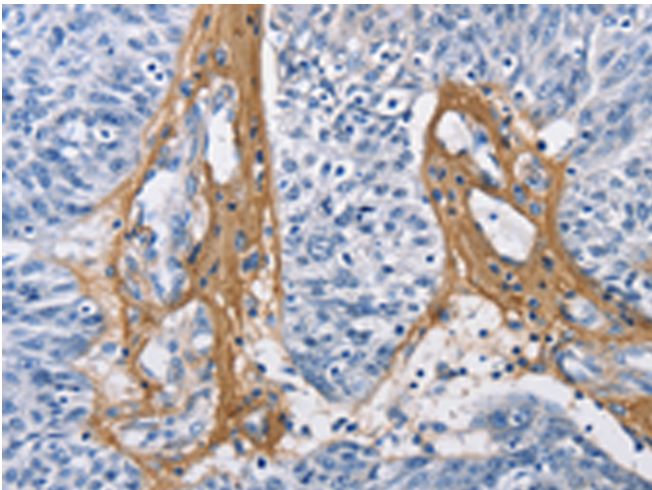
**纯化:** Antigen affinity purification

**种属反应性:** Human, Mouse, Rat

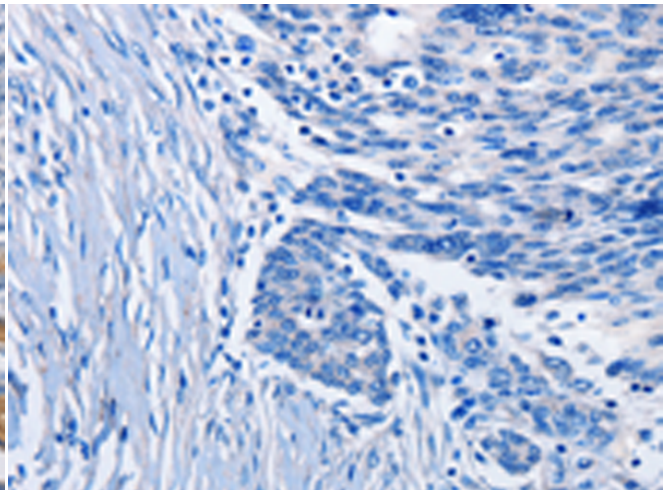
**成分:** PBS (without Mg<sup>2+</sup> and Ca<sup>2+</sup>), pH 7.4, 150 mM NaCl, 0.05% Sodium Azide and 40% glycerol

**研究领域:** Signal Transduction, Stem Cells

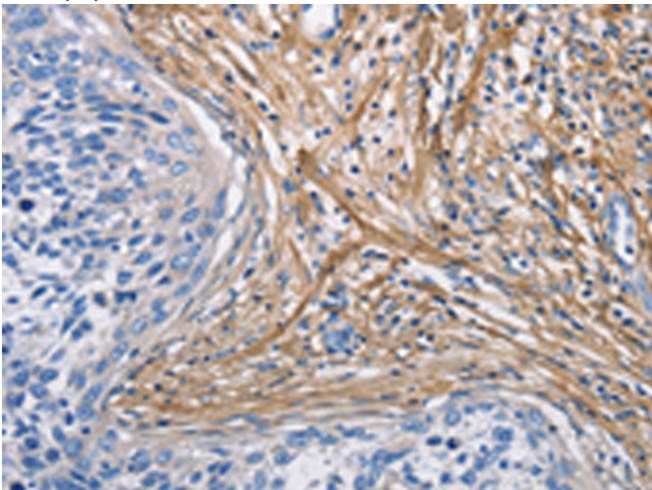
**储存和运输:** Store at -20°C. Avoid repeated freezing and thawing



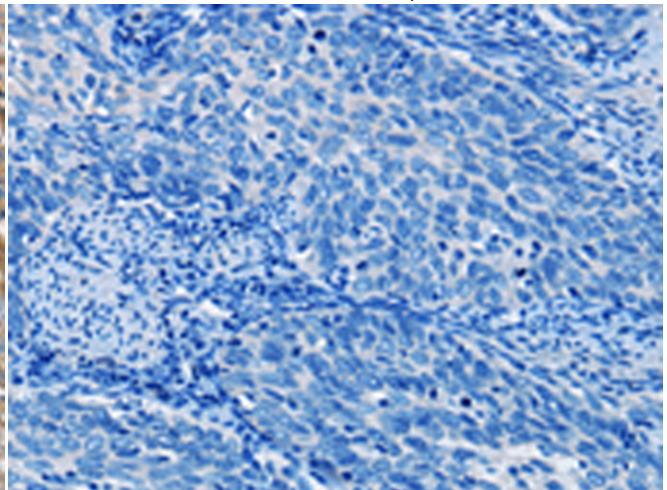
Immunohistochemistry analysis of paraffin embedded Human ovarian cancer tissue using 216438(COL3A1 Antibody) at a dilution of 1/60(Cytoplasm).



In comparison with the IHC on the left, the same paraffin-embedded Human ovarian cancer tissue is first treated with the fusion protein and then with 216438(Anti-COL3A1 Antibody) at dilution 1/60.



The image on the left is immunohistochemistry of paraffin-embedded Human cervical cancer tissue using 216438(Anti-COL3A1 Antibody) at a dilution of 1/60.



In comparison with the IHC on the left, the same paraffin-embedded Human cervical cancer tissue is first treated with fusion protein and then with D220454(Anti-COL3A1 Antibody) at dilution 1/60.



# Product Description

Pioneering GTPase and Oncogene Product Development since 2010

---