

## COG4 RABBIT PAB

**Cat.#:** S218522

**Product Name:** Anti-COG4 Rabbit Polyclonal Antibody

**Synonyms:** COD1; CDG2J

**UNIPROT ID:** Q9H9E3 (Gene Accession - BC013347 )

**Background:** The protein encoded by this gene is a component of an oligomeric protein complex involved in the structure and function of the Golgi apparatus. Defects in this gene may be a cause of congenital disorder of glycosylation type IIj. Two transcript variants encoding different isoforms have been found for this gene.

**Immunogen:** Fusion protein of human COG4

**Applications:** ELISA, IHC

**Recommended Dilutions:** IHC: 20-100; ELISA: 5000-10000

**Host Species:** Rabbit

**Clonality:** Rabbit Polyclonal

**Isotype:** Immunogen-specific rabbit IgG

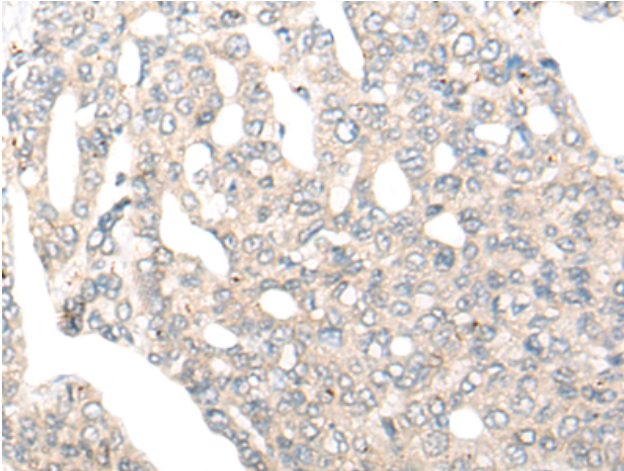
**Purification:** Antigen affinity purification

**Species Reactivity:** Human, Mouse

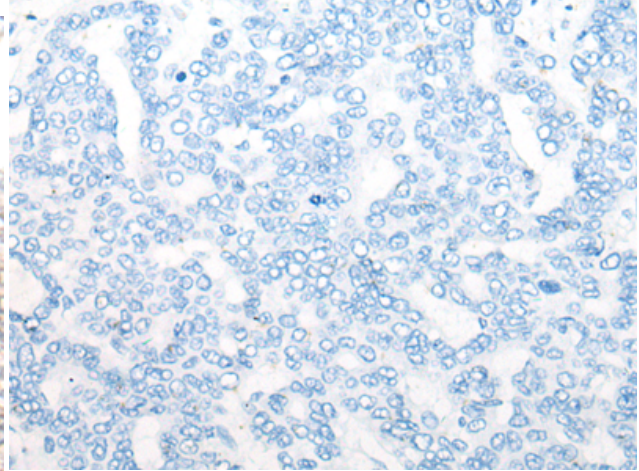
**Constituents:** PBS (without Mg<sup>2+</sup> and Ca<sup>2+</sup>), pH 7.4, 150 mM NaCl, 0.05% Sodium Azide and 40% glycerol

**Research Areas:** Signal Transduction

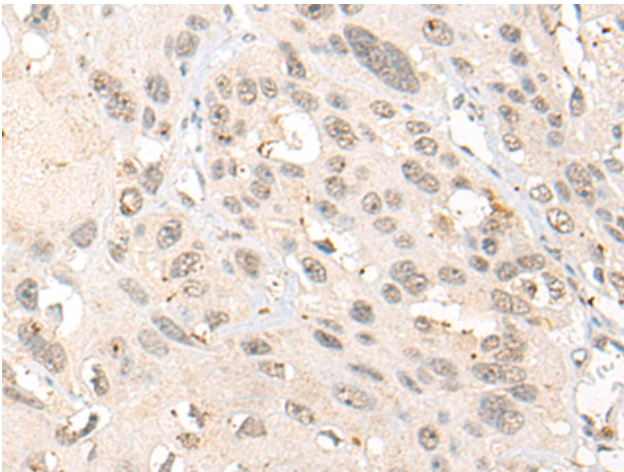
**Storage & Shipping:** Store at -20°C. Avoid repeated freezing and thawing



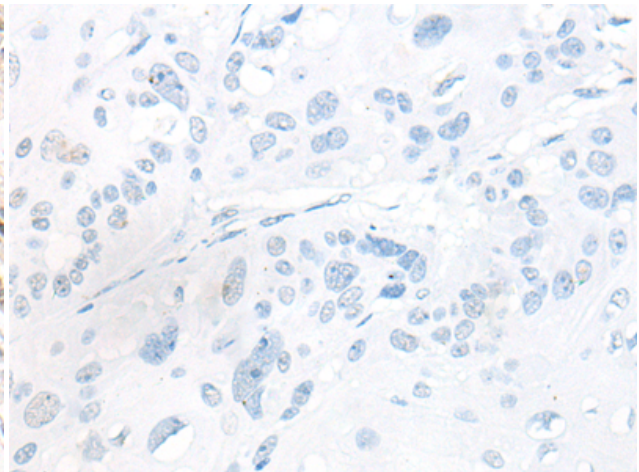
Immunohistochemistry analysis of paraffin embedded Human liver cancer tissue using 218522(COG4 Antibody) at a dilution of 1/20(Cytoplasm or Nucleus).



In comparison with the IHC on the left, the same paraffin-embedded Human liver cancer tissue is first treated with the fusion protein and then with 218522(Anti-COG4 Antibody) at dilution 1/20.



The image on the left is immunohistochemistry of paraffin-embedded Human esophagus cancer tissue using 218522(Anti-COG4 Antibody) at a dilution of 1/20.



In comparison with the IHC on the left, the same paraffin-embedded Human esophagus cancer tissue is first treated with fusion protein and then with D224612(Anti-COG4 Antibody) at dilution 1/20.