

## COFILIN RABBIT MAB

货号: N263276

产品全名: Cofilin 兔单克隆抗体

基因符号 CFL1; CFL; Cofilin-1; 18 kDa phosphoprotein; p18; Cofilin; non-muscle isoform

**UNIPROT ID:** P23528

**背景:** The protein encoded by this gene can polymerize and depolymerize F-actin and G-actin in a pH-dependent manner. Increased phosphorylation of this protein by LIM kinase aids in Rho-induced reorganization of the actin cytoskeleton. Cofilin is a widely distributed intracellular actin-modulating protein that binds and depolymerizes filamentous F-actin and inhibits the polymerization of monomeric G-actin in a pH-dependent manner. It is involved in the translocation of actin-cofilin complex from cytoplasm to nucleus.[supplied by OMIM, Apr 2004]

**抗原:** A synthetic peptide of human Cofilin

**经过测试的应用:** WB,IHC-F,IHC-P,ICC/IF

**推荐稀释比:** WB: 1/500-1/1000 IHC: 1/50-1/100 IF: 1/50-1/200

**种属反应性:** Rabbit

**克隆性:** Rabbit Monoclonal

**克隆编号:** R06-2C0

**分子量:** Calculated MW: 19 kDa; Observed MW: 19 kDa

**亚型:** IgG

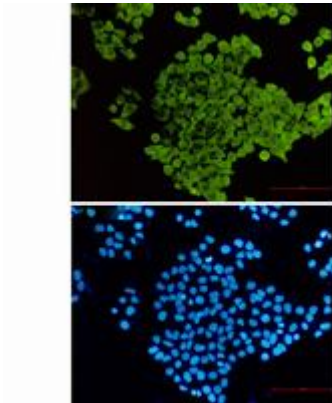
**纯化:** Affinity Purified

**种属反应性:** Human

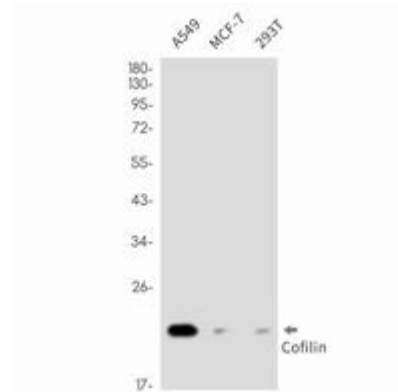
**成分:** PBS (without Mg<sup>2+</sup> and Ca<sup>2+</sup>), pH 7.3 containing 50% glycerol, 0.5% BSA and 0.02% sodium azide

**研究领域:** Signal Transduction

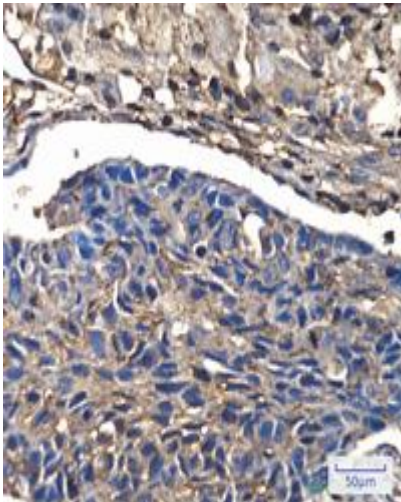
**储存和运输:** Store at -20°C. Avoid repeated freezing and thawing



Immunocytochemistry analysis of Cofilin (green) in HeLa using Cofilin antibody, and DAPI (blue)



Western blot analysis of Cofilin in A549, MCF-7, 293T lysates using Cofilin antibody.



Immunohistochemistry analysis of paraffin-embedded Human lung cancer using Cofilin antibody. High-pressure and temperature Sodium Citrate pH 6.0 was used for antigen retrieval.